

MOLLE A GAS

RIDUZIONE DELLO SFORZO DI AZIONAMENTO, FRENATURA PROGRESSIVA D'ESERCIZIO, FUNZIONAMENTO SICURO E SILENZIOSO SONO LE PRINCIPALI CARATTERISTICHE DI QUESTA GAMMA COMPLETA DI MOLLE A GAS DI ALTA QUALITÀ, PROPOSTA PER L'UTILIZZO IN CAMPO AUTOMOBILISTICO MA ADATTA ANCHE IN QUELLO INDUSTRIALE.

Le molle a gas Cora sono della O.S.R.A.V Alfeo Moret S.p.A, azienda certificata:

Configuratore
cora.link/C11



La molla a gas è un prodotto che, accumulando energia di espansione sotto forma di forza oleo-pneumatica, può svolgere molteplici funzioni nel campo degli azionamenti in genere. Adatta ad equilibrare, sostenere, aprire, chiudere e movimentare elementi mobili. La riduzione dello sforzo di azionamento, la frenatura progressiva di esercizio ed il funzionamento sicuro e silenzioso sono le principali caratteristiche di questo prodotto; caratteristiche che lo rendono adatto all'utilizzo in ogni campo industriale. Il presente catalogo propone una vasta gamma di applicazioni delle molle a gas nel campo automobilistico; tuttavia è possibile studiarne l'utilizzo anche per soluzioni personalizzate. Le molle a gas sono identificate con alcuni valori importanti:

Lunghezza aperta (LA): rappresenta la lunghezza della molla, misurata fra l'asse dell'attacco sul tubo e quello dell'attacco sullo stelo. E' la lunghezza massima in estensione che la molla può raggiungere.

Lunghezza tubo (LT): rappresenta la lunghezza della parte fissa della molla, misurata fra l'asse dell'attacco del tubo stesso ed il punto di uscita dello stelo.

Lunghezza stelo (LS): rappresenta la lunghezza dello stelo, misurata fra il punto di uscita e l'inizio dell'attacco sullo stelo stesso. E' importante tenere in considerazione che la lunghezza dello stelo non equivale alla corsa della molla; infatti ci sono molle a gas che per esigenze costruttive o semplicemente a causa delle dimensioni ridotte non compiono l'escursione completa dello stelo. Pertanto è possibile che in alcuni articoli la corsa effettiva sia minore rispetto alla lunghezza dello stelo. In sede di progetto è utile comunque disporre di una porzione di stelo libera e non interessata al movimento in modo da non rischiare che la molla chiudendosi vada a fine corsa e quindi a danneggiare i suoi componenti.

Corsa (C): rappresenta la differenza di lunghezza fra le dimensioni completamente aperte e completamente chiuse della molla, misurate fra l'asse degli attacchi sullo stelo e sul tubo. E' la lunghezza per la quale si sviluppa lo sforzo applicato dalla molla. Tuttavia in presenza di un punto di fermo in apertura o in chiusura la molla può non compiere l'intera corsa sviluppando comunque parte della sua forza.

Diametro stelo (ØS): rappresenta il diametro dello stelo della molla a gas. Questo diametro è dimensionato in base allo sforzo che la molla può applicare prevedendone già l'utilizzo ad una elevata flessione.

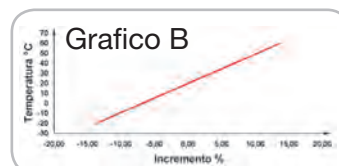
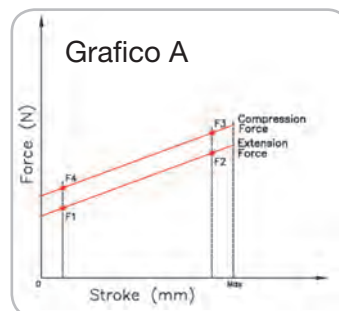
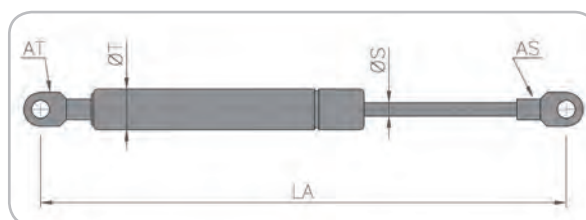
Diametro tubo (ØT): rappresenta il diametro del tubo fisso entro il quale scorre lo stelo. Anche questo diametro è dimensionato in funzione dello sforzo previsto per la molla e del diametro dello stelo.

Attacchi stelo e tubo (AS & AT): rappresentano la tipologia e la forma dei fissaggi per l'ancoraggio della molla a gas al sistema che l'utilizza. Per la maggior parte delle molle a gas gli attacchi sono sostituibili e possono essere cambiati con altri eventualmente più indicati ad applicazioni non automobilistiche.

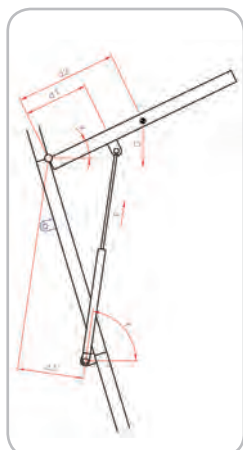
Forza (F): la forza, elemento determinante della molla a gas, è la spinta che la stessa riesce a fornire al componente mobile al quale è applicata. La forza è indicata abitualmente in Newton (N) ed è calcolata appositamente per ogni tipo di applicazione. Per convenienza il valore relativo alla forza è impresso sul corpo di ciascuna molla.

SVILUPPO DELLA FORZA

Il funzionamento della molla a gas è progressivo e segue un andamento che, in termini generali, è espresso nel grafico A: la forza iniziale di apertura (F1) cresce fino allo sviluppo della forza massima (F2); con un ciclo simile ma inverso la molla a gas produce la forza di compressione dal valore massimo (F3) al valore minimo (F4). La misurazione delle forze avviene generalmente ad alcuni millimetri dal punto di chiusura ed



apertura completa in modo da eliminare eventuali isteresi o attriti che possono prodursi ai margini di funzionamento della molla stessa. Le molle a gas sono prodotte per ottenere una forza di esercizio misurata ad una temperatura standard di 20°C. L'utilizzo delle molle a gas avviene però in ambienti che spesso hanno temperature diverse o addirittura in continua variazione; per questo motivo la risposta delle molle, in termini di spinta e di velocità di azionamento può non essere la stessa. In particolare l'incremento (o la riduzione) dell'efficienza delle molle a gas è pari a circa 0.35% ad ogni grado di differenza dalla temperatura di prova. Tale differenza deve essere tenuta in considerazione specie relativamente all'impiego delle molle in campo industriale e nelle micro-apparecchiature.



CALCOLO DI UNA MOLLA A GAS

Il catalogo riporta l'elenco delle molle a gas disponibili in riferimento all'applicazione su uno specifico veicolo. Per queste applicazioni le dimensioni, gli attacchi e la forza sono stati forniti direttamente dalle case produttrici (considerando veicoli in condizione standard di equipaggiamento). In caso di applicazioni di altra natura, invece, le caratteristiche determinanti per la scelta di una molla a gas devono essere ricavate in base al tipo di applicazione. Il calcolo che segue permette di ottenere la forza necessaria ad una molla a gas per sollevare o muovere un componente. E' consigliabile calcolare una percentuale (mediamente del 10%) da sommare alla forza ottenuta quale coefficiente di sicurezza salvo i casi in cui l'esigenza tecnica sia quella di bilanciare perfettamente l'automatismo. Una volta calcolata la forza di cui deve disporre la molla a gas devono essere verificate le dimensioni in funzione dell'applicazione stessa. Queste dimensioni devono consentire alla molla l'apertura e la chiusura nelle condizioni ipotizzate in sede di calcolo.

$$F \cdot \sin y \cdot d1 \cdot \cos x \cdot N = G \cdot d2 \cdot \cos x \cdot 9.81$$

$$F \cdot \sin y \cdot d1 \cdot N = G \cdot d2 \cdot 9.81$$

$$F = \frac{G \cdot d2 \cdot 9.81}{\sin y \cdot d1 \cdot N}$$

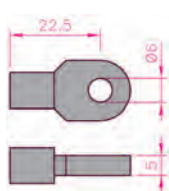
$$F = \frac{G \cdot d2 \cdot 9.81}{d3 \cdot N}$$

- F = Forza della molla a gas (N)
- d3 = Braccio di applicazione della forza F (mm)
- N = Numero delle molle applicate
- y = Angolo di applicazione della molla
- G = Peso dell'anta o dell'automatismo (Kg)
- x = Angolo di inclinazione ad apertura massima
- d1 = Distanza del fulcro dall'attacco molla (mm)
- 9.81 = Coefficiente di conversione da N a Kg.
- d2 = Distanza del fulcro dal baricentro (mm)

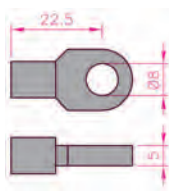
La seguente tabella mostra le figure (riportate a fondo pagina nelle pagine del prontuario molle a gas presente nelle pagine successive) con le loro rispettive dimensioni.



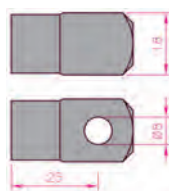
OCCHIO



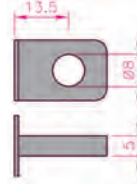
01



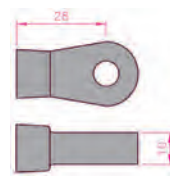
02



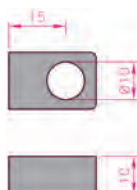
03



04



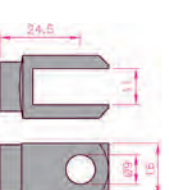
05



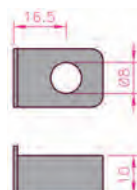
06



07

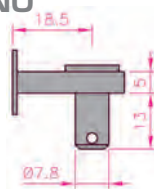


08

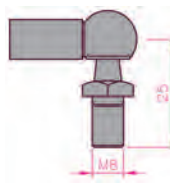


09

PERNO



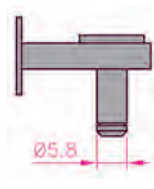
P1



P2



P3



P4

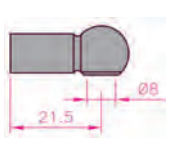


P5

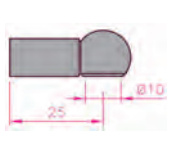
SFERA



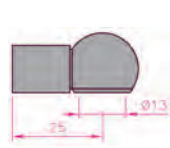
S1



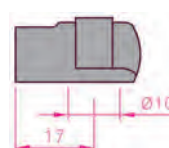
S2



S3



S4



S5



S6

MODELLO E ANNO	APPLICAZIONE	CODICE	PREZZO €	O.E.M.	LA	F	ØS	ØT	AS	AT	
ALFA ROMEO											
33 (905)	06.83>12.93	cp. porta post.	160601518	34,00 ●	605025230	550	210	8	18	S2	O1
33 (905A) Sportwagon	09.84>12.89	cp. porta post.	160601519	33,20 ●	605057710	548	230	8	18	S2	O1
33 Restyling	01.89>09.94	cp. porta post.	160601568	33,20 ●	605673990	548	360	8	18	S2	O1
145 (930)	07.94>01.01	cp. porta post.	160601569	36,60 ●	605677940	309	550	8	18	S1	S1
146 (930)	12.94>01.01	cp. porta post.	160601727	36,60 ●	606048230	522	300	8	18	S1	S1
146 (930)	12.94>01.01	cp. porta post.	160601580	36,60 ●	606125650	522	400	8	18	S1	S1
147 (937)	01.01>03.10	cp. porta post.	160601196	36,60 ●	467715510	435	370	8	18	S3	S1
155 (167)	01.92>12.97	cp. cofano	160601517	36,00 ●	605641120	673	230	8	18	S2	S2
155 (167)	01.92>12.97	cp. baule	160601516	36,00 ●	605405320	280	500	8	18	S1	S1
156 (932)	09.97>05.06	cp. cofano	160601636	38,60 ●	606547240	397	300	8	18	S5	S5
156 berlina (932)	09.97>09.05	cp. baule	160601683	44,80 ●	606510670	264	370	8	18	S5	S5
156 Sport Wagon (932)	05.00>05.06	cp. porta post.	160601341	42,60 ●	60664833	350	620	8	20	S1	S1
159 berlina (140)	09.05>11.11	cp. porta post.	160601343	40,80 ●	60680087	290	380	8	18	S5	S5
159 Sport Wagon (140)	03.06>11.11	cp. porta post.	160601344	53,40 ●	50508010	255	1180	10	22	S1	S1
164 (164)	01.87>09.98	cp. cofano	160601022	35,00 ●	605582220	614	240	8	18	P4	P4
164 (164)	08.91>09.98	cp. baule	160601521	▼ 36,00 ●	605917620	275	430	8	18	S1	S1
166 (936)	09.98>06.07	cp. cofano	160601684	44,80 ●	606589240	434	480	8	18	S5	S5
166 (936)	09.98>06.07	cp. baule	160601685	44,80 ●	606224240	278	390	8	18	S5	S5
Giulietta	04.10>	cp. porta post.	160701430	43,60 ●	50509830	500	410	8	18	S1	S1
GTV (916) Coupè/ Spider	09.94>04.05	cp. cofano	160601583	42,40 ●	605774130	666	200	8	18	S1	S1
GTV (916) Spider	09.94>04.05	cp. baule SX	160601585	42,40 ●	606221670	421	170	8	18	S1	S1
		baule DX			605946940	393	170	8	18	S1	S1
Mito	09.08>	cp. porta post.	160701428	44,00 ●	50515442	460	320	8	18	S1	S1
AUDI											
80 (81, 85, B2)	04.84>08.86	cp. baule	160603549	36,00 ●	811827552A	305	480	8	18	S6	S1
80 (81, 85, B2)	04.84>08.86	cp. baule	160603728	▼ 36,00 ●	811827552	303	400	6	15	S1	S1
80 (81, 85, B2) Coupè	08.81>12.87	cp. baule	160603548	37,00 ●	855827552G	355	245	8	18	S1	S1
80 (89, 8A, B3)	09.86>07.91	cp. baule	160603729	36,00 ●	893827552	275	580	8	18	S3	S3
80 (89, 8A, B3) con spoiler	09.89>07.91	cp. baule	160603629	37,60 ●	893827552A	275	660	8	18	S3	S3
80 (8C, B4) Avant	01.92>01.96	cp. porta post.	160603730	39,00 ●	8A9827552D	573	500	8	18	S1	S1
90 (81, 85, B2)	10.84>03.87	cp. baule	160603549	36,00 ●	811827552A	305	480	8	18	S6	S1
90 (81, 85, B2)	10.84>03.87	cp. baule	160603728	▼ 36,00 ●	811827552	303	400	6	15	S1	S1
90 (81, 85, B2)	04.87>07.91	cp. baule	160603729	36,00 ●	893827552	275	580	8	18	S3	S3
90 (81, 85, B2) con spoiler	04.87>07.91	cp. baule	160603629	37,60 ●	893827552A	275	660	8	18	S3	S3
100 (43, C2)	06.76>02.83	cp. cofano	160603020	49,80 ●	431823359	806	280	10	22	O2	O2
100 (44, C3)	07.82>11.90	cp. cofano	160603036	38,60 ●	443823359B	465	320	8	18	O2	O2
100 (4A, C4)	12.90>07.94	cp. baule	160603628	38,60 ●	4A5827552	403	390	8	18	S3	S3
100 (4A, C4) Avant	09.91>10.94	cp. porta post.	160603732	49,80 ●	445827551	581	470	8	18	S3	S3
200 (43)	10.79>09.82	cp. cofano	160603020	49,80 ●	431823359	806	280	10	22	O2	O2
200 (44)	08.83>09.91	cp. cofano	160603036	38,60 ●	443823359B	465	320	8	18	O2	O2
200 Avant (44)	09.83>09.91	cp. porta post.	160603732	49,80 ●	445827551	581	470	8	18	S3	S3
A1 (8X1)	05.10>	cp. porta post.	160633381	43,40 ●	8X3827552	518	625	8	18	S1	S1
A2 (8Z)	02.00>08.05	cp. porta post.	160603250	42,20 ●	8Z0827552C	502	420	8	18	S5	S6
A3 (8L1) incl. S3	09.96>05.03	cp. cofano	160603686	39,60 ●	8L0823359	500	350	8	18	S3	S6
A3 (8L1)	09.96>08.00	cp. porta post.	160603721	39,00 ●	8D9827552	502	420	8	18	S5	S6
A3 (8L1)	09.00>05.03	cp. porta post.	160603251	46,00 ●	8D9827552F	500	470	8	18	S3	S6
A3 II (8P1)	05.03>08.12	cp. porta post.	160603345	44,00 ●	8P3827552A	488	460	8	18	S5	S5
A3 II (8P1) con spoiler	05.03>08.12	cp. porta post.	160603346	44,00 ●	8P3827552D	495	490	8	18	S5	S5
A3 II (8PA) Sportback	09.04>03.13	cp. porta post.	160614573	38,60 ●	8P4827552B	532	400	8	18	S1	S1
A4 (8D, B5)	10.94>10.00	cp. cofano	160603027	48,60 ●	8D0823359A/B	720	290	8	18	O5	O5
A4 (8D, B5) berlina	10.94>10.00	cp. baule	160603593	42,40 ●	8D5827552A/B	283	470	8	18	S1	S1
A4 (8D, B5) Avant	11.95>09.01	cp. porta post.	160603721	39,00 ●	8D9827552	502	420	8	18	S5	S6
A4 (8E2, B6) berlina	11.00>12.04	cp. baule	160603197	40,20 ●	4B5827552F	295	650	8	18	S1	S1
A4 (8E5, B6) Avant	09.01>12.04	cp. porta post.	160603198	44,80 ●	8E9827552E	502	530	8	18	S1	S1
A4 (8ED, B7) Avant	11.04>06.08	cp. porta post.	160603198	44,80 ●	8E9827552H/K	502	530	8	18	S1	S1
A4 (8K5, B8) Avant (apertura Au)	04.08>	cp. porta post.	160703479	44,00 ●	8K9827552B	500	440	8	18	S3	S3
A5 (8TA) Sportback	09.09>	cp. porta post.	160703472	48,00 ●	8T8827552	483	750	8	18	S5	S5
A6 (4A, C4)	06.94>10.97	cp. baule	160603628	38,60 ●	4A5827552	403	390	8	18	S3	S3
A6 (4B, C5)	01.97>01.05	cp. cofano	160644634	55,40 ●	4B0823359A/B/C	725	280	8	18	S6	S6
A6 (4B, C5) berlina	01.97>04.00	cp. baule	160603626	42,40 ●	4B5827552A/C/D	275	630	8	18	S1	S1
A6 (4B, C5) Avant	12.97>04.00	cp. porta post.	160603688	57,20 ●	4B9827552A	500	635	8	18	S5	S6
A6 (4B, C5) berlina	05.00>01.05	cp. baule	160603197	40,20 ●	4B5827552F	295	650	8	18	S1	S1
A6 (4B, C5) Avant	04.00>03.05	cp. porta post.	160603349	44,80 ●	4B9827552E/L/M	500	690	10	22	S6	S5
A6 (4F2, C6) Ber. (Apertura Au)	05.04>03.11	cp. baule	160703431	38,80 ●	4F5827552A/B	300	670	8	18	S6	S5
Q5 (8R)	11.08>	cp. porta post.	160703475	52,00 ●	8R0827552	500	500	8	18	S6	S5
TT (8N)	10.98>06.06	cp. cofano	160603593	42,40 ●	8N0823359	283	470	8	18	S1	S1
TT (8N) Coupè	10.98>06.06	cp. baule	160603351	43,40 ●	8N8827552	405	520	8	18	S5	S5
TT (8N) Roadster	10.99>06.06	cp. baule	160603352	44,00 ●	8N7827552A	405	150	8	18	S5	S5
TT (8J9) Roadster	10.06>06.14	cp. baule	160603353	48,80 ●	8J8827552	470	630	8	18	S5	S5
AUSTIN											
Mini Metro	10.80>04.90	cp. porta post.	160604570	53,40 ●	AFP1282	545	360	8	18	S1	S1
Montego (XE) station wagon	10.84>12.93	cp. porta post.	160604055	44,80 ●	CDP6335	551	470	8	18	X	S1
AUTOBIANCHI											
A 112	10.69>12.86	cp. porta post.	160605017	31,80 ●	4484653	362	190	8	18	S1	O2
Y 10	06.85>12.95	cp. porta post.	160605523	38,60 ●	59700970/ 7703325	600	160	8	18	S3	S3
BMW											
Mini (R50-R53)	06.01>09.06	cp. porta post.	160608213	37,00 ●	41626801258	498	330	8	18	S1	S1
Mini (R56)	10.06>	cp. porta post.	160708453	50,00 ●	51247148902	495	370	8	18	S1	S1
Mini (R60) Countryman	06.10>	cp. porta post.	160708844	42,00 ●	51249801386	493	460	8	18	S1	S5
Serie 1 (E87)	09.04>09.12	cp. porta post.	160708433	52,60 ●	51247060622	410	400	8	18	S5	S5
Serie 3 (E36)	11.90>02.98	cp. cofano	160608716	40,60 ●	51231960852	364	320	6	15	O2	O2

I prodotti contrassegnati dal simbolo ▼ si intendono ad esaurimento scorte.

LA: lunghezza totale (mm) ØT: diametro tubo (mm) AS: attacco stelo AT: attacco tubo ØS: diametro stelo (mm) F: carica in Newton



MODELLO E ANNO	APPLICAZIONE	CODICE	PREZZO €	O.E.M.	LA	F	ØS	ØT	AS	AT
segue BMW										
Serie 3 (E36) Coupè	06.92>04.99	cp. cofano	160608063	40,60 ●	51238119558	410	280	6	15	X X
Serie 3 (E36) Touring	01.95>10.99	cp. porta post.	160608733	84,00 ●	51248217305	515	390	10	18	S1 S1
Serie 3 (E46) (escluso M3)	02.98>02.05	cp. cofano	160608645	44,80 ●	51238202688	316	580	8	18	S5 S5
Serie 3 (E46) berlina - Coupè	02.98>02.05	cp. baule	160608064	40,60 ●	51248254281	349	320	8	18	S1 S1
Serie 3 (E46) Touring	09.99>02.05	cp. porta post.	160608256	37,20 ●	51248232873	543	450	8	18	S3 S3
Serie 3 (E90)	01.05>12.11	cp. baule	160708439	45,20 ●	51244365788	370	320	8	18	S5 S5
Serie 3 (E91) Touring	09.05>	cp. porta post.	160725452	48,00 ●	51247127875	540	450	8	22	S1 S5
Serie 5 (E34)	01.88>01.97	cp. cofano	160608066	47,00 ●	51231944119	240	380	8	18	X X
Serie 5 (E34) berlina	01.88>11.95	cp. baule	160608065	47,00 ●	51248110327	365	410	8	18	X X
Serie 5 (E34) Touring	08.91>01.97	cp. porta post. SX	160608735	147,20 ●	51248149327	730	360	10	18	S3 X
		porta post. DX			51248149328	730	360	10	18	S3 X
Serie 5 (E39)	11.95>07.04	cp. cofano	160608736	47,00 ●	51238174866	332	680	8	18	S1 S1
Serie 5 (E39) berlina	11.95>05.96	cp. baule	160608737	98,40 ●	51248159239	338	520	10	18	S3 X
Serie 5 (E39) berlina	05.96>07.04	cp. baule	160608738	98,40 ●	51248222913	348	540	10	18	S3 X
Serie 5 (E39) Touring	01.97>07.04	cp. porta post.	160608772	40,60 ●	51248190688	242	560	8	18	O2 S3
Serie 5 (E61) Touring	06.04>	cp. porta post.	160708480	42,00 ●	5,12E+10	583	340	8	18	S5 S5
Serie 6 (E24)	04.76>09.90	cp. cofano	160608026	▼ 45,80 ●	51231869147	498	230	8	18	O2 O2
Serie 7 (E23)	05.77>08.86	cp. cofano	160608026	▼ 45,80 ●	51231869147	498	230	8	18	O2 O2
X1 (E84)	10.09>	cp. porta post.	160614262	36,20 ●	51242990136	570	460	8	18	S5 S5
CHEVROLET										
Aveo (T250, T255) 2 volumi	04.08>	cp. porta post.	160759216	41,00 ●	96540939	390	350	8	18	S1 S1
Captiva (C100, C140)	06.06>	cp. porta post.	160759482	40,00 ●	95494360 / 96830123	585	500	8	18	S5 S5
Kalos	03.05>	cp. porta post.	160759216	41,00 ●	96540939	390	350	8	18	S1 S1
CITROEN										
AX (ZA-)	07.86>12.98	cp. porta post.	160609531	36,00 ●	9563195680	545	300	8	18	S1 S1
Berlingo (MF, M)	07.96>	cp. porta post.	160609643	48,60 ●	8731E0	698	660	8	18	S1 S1
BX (XB)	01.82>11.94	cp. porta post.	160609529	36,60 ●	6556845480	640	300	8	18	S1 S1
BX (XB) Break	08.85>11.94	cp. porta post.	160609638	42,80 ●	9560649080	650	460	8	18	S1 S1
BX GT (XB)	01.82>10.86	cp. porta post.	160609640	39,60 ●	9559852680	640	300	8	18	S1 O2
BX Turbo (XB)	10.86>11.94	cp. porta post.	160609046	42,80 ●	9563598980	655	400	8	18	O2 O2
C1 (PM, PN)	06.05>	cp. porta post.	160709434	45,00 ●	8731L0	550	305	8	18	S5 S5
C2 (JM)	09.03>	cp. porta post.	160609214	31,00 ●	9641721980 / 8731H8	458	380	8	18	S5 S5
C3 (FC)	04.02>	cp. porta post.	160609257	39,00 ●	9639853880 / 8731G3	440	420	8	18	S1 S1
C3 II	11.09>	cp. porta post.	160709440	43,40 ●	8731T9	470	430	8	18	S5 S5
C3 Picasso	02.09>	cp. porta post.	160709441	47,60 ●	8731T9	550	420	8	18	S1 S1
C4 (LC) berlina	11.04>	cp. porta post.	160609780	37,00 ●	9647295480 / 8731J8	545	425	8	18	S1 S1
C4 (LA) Coupè	11.04>	cp. porta post.	160609354	42,00 ●	9647295380 / 8731K0	556	500	8	18	S5 S5
C4 II (B7)	11.09>	cp. porta post.	160709442	42,00 ●	8731V8	490	475	8	18	S5 S5
C4 Picasso	02.07>	cp. porta post.	160709443	46,00 ●	8731P2	635	545	8	18	S5 S6
C4 Gran Picasso (lunotto fisso)	02.07>	cp. porta post.	160709444	51,00 ●	8731N9	585	605	8	18	S5 S6
C5 (DC) berlina	03.01>08.04	cp. porta post.	160609356	37,00 ●	8731F6	512	450	8	18	S5 S5
C5 II (RC) berlina	09.04>	cp. porta post.	160709483	40,00 ●	8731K1	494	585	8	18	S3 S3
C5 (DE) Break (lunotto)	06.01>08.04	cp. porta post.	160609258	76,00 ●	8731F7	289	250	8	18	S5 X
C5 III (TD) Break (apertura manuale)	02.08>	cp. porta post.	160709484	48,00 ●	8731R6	545	535	8	18	S5 S1
C8 (EA, EB)	07.02>	cp. porta post.	160609215	34,00 ●	8731G6	632	510	8	18	S5 S5
C-Crosser (EP_)	02.07>	cp. porta post.	160603721	39,00 ●	8731Q1	502	420	8	18	S5 S6
DS3	11.09>	cp. porta post.	160709445	41,80 ●	8731V4	420	380	8	18	S5 S5
DS4	04.11>	cp. porta post.	160709485	38,00 ●	9801060880	510	350	8	18	S5 S5
Evasion (22, U6)	03.94>11.95	cp. porta post.	160630713	40,60 ●	8731A3	627	570	8	18	S1 S1
Evasion (22, U6)	11.95>07.02	cp. porta post.	160630714	40,60 ●	8731C1	610	560	8	18	S1 S1
Evasion (22, U6)	06.94>07.02	cp. porta post.	160613571	42,40 ●	9618278480	625	630	8	18	S1 S1
GS	09.70>07.86	cp. porta post.	160609039	37,00 ●	GX6714001B	518	280	8	18	O2 O2
GS/GSA Break	09.70>07.86	cp. porta post.	160609041	37,00 ●	95491745	596	260	8	18	O2 O2
Nemo (AA)	11.09>	cp. porta post.	160713426	47,00 ●	8731V0	600	670	8	18	S5 S5
Saxo (S0, S1)	05.96>02.02	cp. porta post.	160609594	40,60 ●	8731C0	610	355	8	18	S1 S1
Visa	09.78>03.91	cp. porta post.	160609023	36,00 ●	9558825480	597	500	8	18	O2 O2
Xantia (X1)	07.93>01.98	cp. porta post.	160609595	42,40 ●	8731P7	600	590	8	18	S3 S3
Xantia (X2)	01.98>09.01	cp. porta post.	160609690	49,40 ●	8731C3	603	680	8	18	S1 S1
Xantia Break (X1, X2)	06.95>04.03	cp. porta post.	160609691	42,40 ●	8731A8	593	480	8	18	S1 S1
XM (Y3, Y4)	05.89>10.00	cp. cofano	160609644	▼ 44,80 ●	9563914480	545	250	8	18	S1 O2
XM (Y3, Y4) Break	05.89>10.00	cp. porta post.	160609642	49,80 ●	9602696480	838	395	8	18	S1 S1
Xsara (N1, N2)	04.97>09.00	cp. cofano	160609692	49,40 ●	9629618980	458	300	8	18	S5 S5
Xsara (N1, N0)	04.97>04.05	cp. porta post.	160609693	49,40 ●	8731E3	625	360	8	18	S5 S5
Xsara (N2) Break	10.97>08.05	cp. porta post.	160609705	47,80 ●	9626677480	656	400	8	18	S5 S5
Xsara Picasso (N68)	12.99>09.00	cp. cofano	160609692	49,40 ●	9629618980	458	300	8	18	S5 S5
Xsara Picasso (N68)	12.99>	cp. porta post.	160609135	38,20 ●	8731F1	672	390	8	18	S5 S5
ZX (N2)	03.91>06.97	cp. porta post.	160609639	40,20 ●	9612361280	602	320	8	18	S1 S1
ZX (N2) con spoiler	03.91>06.97	cp. porta post.	160609596	42,40 ●	9602754380	600	380	8	18	S1 S1
ZX (N2) Break	10.93>10.97	cp. porta post.	160609530	35,00 ●	9612212280	540	520	8	18	S1 S1
DACIA										
Duster	04.10>	cp. porta post.	160762486	48,00 ●	904520004R	405	595	8	18	S1 S1
Logan MCV (KS)	02.07>	cp. porta post.	160762446	50,00 ●	8200735264	520	370	8	18	S1 S1
Sandero	06.08>	cp. porta post.	160762446	50,00 ●	8200735264	520	370	8	18	S1 S1
DAEWOO - CHEVROLET										
Lanos (KLAT)	04.97>	cp. porta post.	160659674	99,80 ●	96306157	480	450	10	22	S3 S3
Matiz (KLYA)	09.98>	cp. porta post.	160659673	60,60 ●	96314606	490	605	8	18	S3 S3
Nubira (KLAJ) station wagon	06.97>	cp. porta post.	160659694	74,00 ●	96306833	450	560	8	18	P2 P2
FIAT										
126 Bis	07.87>09.00	cp. porta post.	160613029	33,20 ●	7550938	550	220	8	18	O2 O2
127	06.71>03.77	cp. porta post.	160613006	32,60 ●	4297742	548	350	8	18	O2 O2
127	04.77>09.86	cp. porta post.	160613007	34,80 ●	4426871	595	180	8	18	O2 O2

I prodotti contrassegnati dal simbolo ▼ si intendono ad esaurimento scorte.

LA: lunghezza totale (mm) ØT: diametro tubo (mm) AS: attacco stelo AT: attacco tubo ØS: diametro stelo (mm) F: carica in Newton

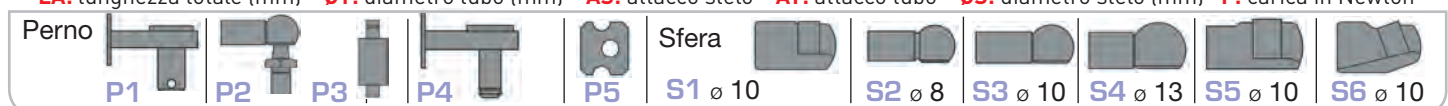
Attacco speciale: X

01 ø 6 02 ø 8 03 ø 8 04 ø 8 05 ø 8 06 ø 10 07 ø 8 08 09 ø 8

MODELLO E ANNO	APPLICAZIONE	CODICE	PREZZO €	O.E.M.	LA	F	ØS	ØT	AS	AT
segue FIAT										
128	03.69>12.84	cp. porta post.	160613009	37,60 ●	39440480	598	390	8	18	O2 O2
131 Panorama	03.74>04.85	cp. porta post.	160613012	37,00 ●	4327325	598	250	8	18	O2 O2
132 (GLS-Diesel)	04.72>12.82	cp. baule	160613005	37,60 ●	4405569	256	280	8	18	O2 O2
500 (312) incluso Abarth	10.07>	cp. porta post.	160713488	38,00 ●	51785412	455	350	8	18	S5 S5
500 L	09.12>	cp. porta post.	160713489	40,00 ●	51883050	555	680	8	18	S5 S5
500X	09.14 >	cp. porta post.	160713490	46,00 ●	52029616	450	480	8	18	S1 S1
Argenta	06.78>07.86	cp. baule	160613010	40,60 ●	44531950	256	320	8	18	O2 O2
Barchetta (183)	03.95>05.05	cp. baule	160613028	42,40 ●	47300075	404	170	8	18	O2 O2
Brava (182)	10.95>12.02	cp. porta post.	160613581	39,60 ●	77697370	519	350	8	18	S1 S1
Bravo (182)	10.95>12.02	cp. porta post.	160613582	40,60 ●	7774707	470	360	8	18	S1 S1
Bravo II (198)	11.06>	cp. porta post.	160713491	44,00 ●	51812267	507	360	8	18	S1 S1
Cinquecento (170)	07.91>01.98	cp. porta post.	160613505	34,00 ●	46453503	566	210	8	18	S5 S5
Coupè (175)	11.93>12.97	cp. cofano DX	160613586	42,40 ●	46304290	676	250	8	18	S2 S2
		cofano SX			46305241	675	250	8	18	S2 S2
Croma (154)	12.85>12.96	cp. baule	160613008	35,60 ●	824296860	500	510	8	18	O2 O2
Croma (194)	06.05>	cp. porta post.	160613357	43,80 ●	51934960	628	440	8	18	S5 S5
Doblo' (119, 223)	03.01>	cp. porta post.	160613260	43,60 ●	46824070	860	400	8	18	S1 S1
Doblo' II (263)	02.10>	cp. porta post.	160713425	59,00 ●	5185487	795	720	8	18	S1 S1
Ducato (280, 290)	01.82>03.94	cp. porta post.	160613011	68,80 ●	44240450	800	500	10	27	O3 O9
Duna (146B) Weekend	01.87>12.91	cp. porta post.	160613504	40,60 ●	7516691	527	520	8	18	S1 S1
Fiorino (225)	02.08>	cp. porta post.	160713426	47,00 ●	8731V0	600	670	8	18	S5 S5
Freemont (JF_)	06.08>	cp. porta post.	160713492	48,00 ●	68101213AA	500	550	8	18	S1 S1
Idea (135)	01.04>	cp. porta post.	160613217	35,80 ●	46830389	473	480	8	18	S6 S5
Marea (185) Weekend	09.96>	cp. porta post.	160613597	41,20 ●	46420780	506	420	8	18	S5 S5
Multipia (186)	04.99>	cp. cofano	160613624	78,00 ●	46559858	210	200	8	18	S5 S5
Multipia (186)	04.99>	cp. porta post.	160613622	43,60 ●	46514867	507	520	8	18	S5 S5
Palio (178DX) Weekend	04.96>	cp. porta post.	160613621	37,00 ●		585	480	8	18	S1 S1
Palio (178DX) Weekend	04.96>	cp. porta post.	160613775	36,40 ●	46524047	518	570	8	18	S5 S5
Panda (141_A)	03.80>09.86	cp. porta post.	160613001	31,80 ●	44836580	547	240	8	18	O2 P1
Panda Supernova (141_A)	10.86>07.04	cp. porta post.	160613002	34,20 ●	75501720	548	400	8	18	O2 P1
Panda II (169)	09.03>	cp. porta post.	160613218	35,60 ●	46827091	504	280	8	18	S5 S5
Punto I (176)	09.93>08.99	cp. porta post.	160613506	35,00 ●	77345660	445	300	8	18	S1 S1
Punto II (188) 3 porte	09.99>	cp. porta post.	160613676	35,00 ●	46744596	470	330	8	18	S1 S1
Punto II (188) 5 porte	09.99>	cp. porta post.	160613682	35,00 ●	46524678	456	380	8	18	S1 S1
Punto III (199) - Grande punto	10.05>	cp. porta post.	160613358	42,20 ●	51778432	440	350	8	18	S5 S5
Punto Evo (199)	09.08>	cp. porta post.	160613358	42,20 ●	51778432	440	350	8	18	S5 S5
Punto IV (199)	03.12>	cp. porta post.	160613358	42,20 ●	51778432	440	350	8	18	S5 S5
Qubo (225)	09.08>	cp. porta post.	160713426	47,00 ●	8731V0	600	670	8	18	S5 S5
Regata (138) Weekend	01.84>12.89	cp. porta post.	160613507	36,00 ●	5981660	542	300	8	18	S1 S1
Ritmo 60/65/75 (138A, 178E)	01.78>07.83	cp. porta post.	160613003	31,80 ●	39401990	600	360	8	18	O2 O4
Ritmo (138A, 178E) Restyling	07.83>12.88	cp. porta post.	160613004	34,60 ●	39462450	602	360	8	18	O2 O4
Sedici	06.06>	cp. porta post.	160713427	52,00 ●	71743352/71743353	440	420	8	18	S1 S5
Seicento (187)	01.98>01.10	cp. porta post.	160613505	34,00 ●	46453503	566	210	8	18	S5 S5
Stilo (192)	09.01>11.06	cp. cofano	160613200	39,00 ●	46784590	507	250	8	18	S1 S1
Stilo (192) berlina (3 porte)	09.01>11.06	cp. porta post.	160613201	35,60 ●	46784994	445	460	8	18	S1 S3
Stilo (192) berlina (5 porte)	09.01>11.06	cp. porta post.	160613202	35,60 ●	46784995	505	380	8	20	S1 S1
Stilo (192) MultiWagon	01.03>08.08	cp. porta post.	160613203	37,00 ●	51716996	610	830	10	22	S1 S1
Strada (178E)	01.78>07.83	cp. porta post.	160613003	31,80 ●	39401990	600	360	8	18	O2 O4
Strada (178E)	07.83>12.88	cp. porta post.	160613004	34,60 ●	39462450	602	360	8	18	O2 O4
Tempra (159) Weekend	03.90>08.97	cp. porta post.	160613508	36,00 ●	76063040	632	330	8	18	S6 S1
Tipo (160)	07.87>04.95	cp. porta post.	160613503	35,00 ●	76717000	582	270	8	18	S1 S1
Ulysse (220)	03.94>11.95	cp. porta post.	160630713	40,60 ●	8731A3	627	570	8	18	S1 S1
Ulysse (220)	11.95>08.02	cp. porta post.	160630714	40,60 ●	8731C1	610	560	8	18	S1 S1
Ulysse (220)	03.94>08.02	cp. porta post.	160613571	42,40 ●	9622553680	625	630	8	18	S1 S1
Ulysse II (179AX)	08.02>	cp. porta post.	160613219	31,80 ●	1489342080	630	500	8	18	S5 S5
Uno (146A)	01.83>08.89	cp. porta post.	160613501	32,00 ●	59935420	600	420	8	18	S1 S1
Uno (146A) Turbo	04.85>03.91	cp. porta post.	160613623	36,00 ●	7571080	592	430	8	18	S1 S1
Uno (146A) Restyling	09.89>12.96	cp. porta post.	160613502	33,60 ●	76360490	566	280	8	18	S1 S1
FORD										
B-Max (JK)	10.12>	cp. porta post.	160714493	48,00 ●	AV11R406A10AB	553	550	8	22	S5 S5
C-Max (DM2)	02.07>	cp. porta post.	160614262	36,20 ●	3M51R406A10AB	570	460	8	18	S5 S5
C-Max II	12.10>	cp. porta post.	160714494	40,00 ●	AM51-R406A10-AE	683	565	8	18	S5 S5
Escort III-IV	09.80>07.90	cp. porta post.	160614566	44,80 ●	86ABB406A10GA	577	320	8	18	S1 S1
Escort XR3	01.86>07.90	cp. porta post.	160614572	39,60 ●	86ABB406A10HA	577	410	8	18	S1 S1
Escort V-VI-VII station wagon	08.90>09.00	cp. porta post.	160614573	38,60 ●	91ABW406A10A1C	532	400	8	18	S1 S1
Escort VI-VII	05.92>09.00	cp. porta post.	160614739	44,80 ●	93ABA406A10B1B	545	440	8	18	S1 S1
Fiesta I (GFBD)	05.76>08.83	cp. porta post.	160614552	40,60 ●	77FBB404K04AD	613	380	8	18	S1 S1
Fiesta II (FBD)	08.83>12.88	cp. porta post.	160614740	40,60 ●	84FBB406A10DB	614	330	8	18	S1 S1
Fiesta III (GFJ)	03.89>04.93	cp. porta post.	160614553	36,00 ●	89FBB406A10B1C	570	645	8	18	S1 S1
Fiesta III (GFJ)	04.93>03.96	cp. porta post.	160614741	36,60 ●	93FBB406A10BA	578	295	8	18	S1 S1
Fiesta IV (JA, JB)	01.96>10.01	cp. porta post.	160614598	40,60 ●	96FBB406A10AA/BA	577	325	8	18	S1 S1
Fiesta V (JH, JD) 3 porte	11.01>06.08	cp. porta post.	160614220	45,40 ●	1251915/1218538	625	575	8	18	S5 S5
Fiesta V (JH, JD) 5 porte	11.01>06.08	cp. porta post.	160614359	44,00 ●	2S61A406A10AC	600	440	8	18	S5 S5
Focus I (DAW, DBW) berlina	06.98>10.00	cp. porta post.	160614678	43,60 ●	XS41A406A10AE	463	655	8	18	S1 S1
Focus I (DAW, DBW) berlina	03.02>11.04	cp. porta post.	160714495	38,00 ●	3M51A406A10AB	455	700	8	18	S1 S1
Focus I (DNW) station wagon	02.99>12.04	cp. porta post.	160614679	45,20 ●	XS41N406A10AE	516	550	8	18	S1 S1
Focus II (DA) berlina	11.04>	cp. porta post.	160614360	42,20 ●	4M51A406A10AB	484	530	8	18	S1 S1
Focus II (DAW) station wagon	11.04>	cp. porta post.	160714895	36,00 ●	1349309	580	435	8	18	S1 S1
Focus III berlina	04.11>	cp. porta post.	160714896	46,00 ●	BM51A406A10AD	600	385	8	18	S1 S6
Focus C-Max (DMZ)	10.03>03.07	cp. porta post.	160614262	36,20 ●	3M51R406A10AB	570	460	8	18	S5 S5
Fusion (JU)	08.02>	cp. porta post.	160614221	47,60 ●	2N11N406A10AD	555	500	8	18	S5 S5

I prodotti contrassegnati dal simbolo ▼ si intendono ad esaurimento scorte.

LA: lunghezza totale (mm) **ØT:** diametro tubo (mm) **AS:** attacco stelo **AT:** attacco tubo **ØS:** diametro stelo (mm) **F:** carica in Newton



MODELLO E ANNO	APPLICAZIONE	CODICE	PREZZO €	O.E.M.	LA	F	ØS	ØT	AS	AT
segue FORD										
Galaxy (WGR) 02.95>05.06	cp. porta post.	160614659	62,60	● 95VW442K08AG	596	775	10	27	S6	S1
Galaxy (CA1) 05.06>	cp. porta post.	160614361	78,40	● 6M21U406A10AC	575	990	10	22	S5	S5
Ka (RB) 09.96>11.08	cp. porta post.	160614658	42,40	● 97KGB406A10AA	447	310	8	18	S1	S1
Kuga 03.08>	cp. porta post.	160714447	55,20	● 1537538	657	480	8	18	S1	S1
Mondeo I-II (GBP) berlina 03.93>08.96	cp. porta post.	160614599	45,80	● 93BBA406A10AD	552	515	8	18	S1	S1
Mondeo I-II (BNP) station wagon 03.93>11.00	cp. porta post.	160614574	42,40	● 93BBN406A10AC	485	640	8	18	S1	S1
Mondeo III (B4Y, B5Y) berlina 11.00>08.07	cp. porta post.	160614222	43,80	● 1S71F406A10AB	300	560	8	18	S5	S5
Mondeo III (BWY) station wagon 11.00>08.07	cp. porta post.	160614223	42,20	● 1S71N406A10AB	556	475	8	18	S5	S6
Mondeo IV berlina 03.07>	cp. porta post.	160714448	45,60	● 7S71F406A10AF	380	540	8	18	S1	S5
Mondeo IV station wagon 03.07>	cp. porta post.	160714496	40,00	● 7S71N406A10AD	537	585	8	18	S1	S1
Puma (ECT) 03.97>06.02	cp. porta post.	160614657	48,60	● V97FBC406A10AB	581	200	8	18	S1	S6
S-Max (WA6) 05.06>	cp. porta post.	160614362	50,40	● 6M21R406A10AD	605	635	10	22	S6	S6
Sierra (GB) 08.82>02.93	cp. porta post.	160614554	42,40	● 83BBA406A10AD	498	450	8	18	S1	S1
Sierra (BN) station wagon 08.82>02.93	cp. porta post.	160614555	42,40	● 83BBN406A10BB	484	500	8	18	S1	S1
Tourneo Connect 06.02>	cp. porta post.	160714449	54,00	● 2T14V406A10AB	678	480	8	18	S1	S5
Transit 09.70>10.85	cp. porta post.	160614575	42,40	● 86VBV406A10CA	554	790	8	18	S1	S1
Transit 11.85>08.91	cp. porta post.	160614742	42,40	● 86VBV406A10CA	550	850	10	22	S1	S1
Transit 11.85>08.91	cp. porta post.	160614743	42,40	● 86VBV406A10BA	550	810	10	22	S1	S1
Transit (F_) 01.00>05.06	cp. porta post.	160714497	52,00	● 1C15V406A10EA	849	670	10	22	S1	S1
Transit Connect (P65_P70_P80) 06.02>	cp. porta post.	160714449	54,00	● 2T14V406A10AB	678	480	8	18	S1	S5
HONDA										
Civic (EC, ED, EE) 88>92	cp. porta post.	160616669	▼ 79,40	● 74820SH3A01	636	200	8	18	P2	P2
Civic (EG) 3 porte 10.91>11.95	cp. porta post.	160616601	81,80	● 74820SR3305	465	180	8	18	P2	P2
Civic (MA, MB) 5 porte 09.94>02.01	cp. porta post.	160616602	81,80	● 74820ST3E010	515	425	8	18	P2	P2
Civic (EJ9 - EK) 3 porte 11.95>02.01	cp. porta post. SX	160616074	97,20	● 04746S03000	625	320	10	22	P2	X
	porta post. DX			● 04741S03000	625	320	10	22	P2	X
Civic VII (FN, FK) hatchback 01.06>	cp. porta post.	160716498	40,00	● 74820SMGE010	640	455	8	18	S1	S1
Concerto (HW) 08.89>03.95	cp. porta post.	160635614	40,60	● BHE38025	682	380	8	18	S1	S1
Concerto (HW) con spoiler 08.89>03.95	cp. porta post.	160635700	45,40	● BHE38017	687	390	8	18	S3	S3
CR-V III (RE) 01.07>	cp. porta post.	160716499	60,00	● 74870SWAA01	625	510	10	22	S1	S1
CRX (ED, EE) 10.87>02.92	cp. porta post.	160616670	84,40	● 74820SH2601	536	340	8	18	P2	X
HR-V (GH) 03.99>	cp. porta post. DX	160616076	103,80	● 04741S2H010	727	400	10	22	P2	X
	porta post. SX			● 04746S2H010	727	400	10	22	P2	X
Jazz (GD) 03.02>07.08	cp. porta post. DX	160616263	96,20	● 04741SAA000	415	500	10	22	X	X
	porta post. SX			● 04746SAA000	415	500	10	22	X	X
HYUNDAI										
Accent (X-3) 09.94>01.00	cp. porta post.	160617080	75,80	● 8177022200	540	450	10	22	P2	P2
Accent (LC) 01.00>11.05	cp. porta post. DX	160617078	93,00	● 81780-24212	596	230	8	18	X	X
Accent (LC) 01.00>11.05	porta post. SX			● 81770-24212	596	230	8	18	X	X
Atos >98	cp. porta post.	160617717	▼ 73,50	● 81780-02010	598	360	10	22	S3	X
Atos (MX) 02.98>	cp. porta post. DX	160617083	75,80	● 81770-02010	595	360	10	22	S1	X
	porta post. SX			● 81780-02010	595	360	10	22	S1	X
Atos Prime (MX) 08.99>	cp. porta post. DX	160617392	76,00	● 8177006000	450	450	8	18	S1	X
	porta post. SX			● 8178006000	450	450	8	18	S1	X
Excel - Pony 01.90>01.95	cp. porta post.	160617080	75,80	● 8177022200	540	450	10	22	P2	P2
Getz (TB) 09.02>06.09	cp. porta post.	160617266	70,00	● 817701C000	485	370	8	18	S1	S5
H 100 07.93>03.00	cp. porta post. SX	160617082	97,40	● 8395043100	805	700	10	22	X	X
	porta post. DX			● 8395043100	805	700	10	22	X	X
i10 (PA) 01.08>	cp. porta post.	160613582	40,60	● 817700X000	470	360	8	18	S1	S1
i20 (PB, PBT) 09.08>	cp. porta post.	160629296	38,00	● 817701J000	425	450	8	18	S6	S5
i30 (FD) 10.07>11.11	cp. porta post.	160637706	36,00	● 817702L000	575	330	8	18	S1	S1
i30 CW (FD) 10.07>06.12	cp. porta post.	160644565	37,60	● 817702L201	518	460	8	18	S1	S3
i30 (GD) incluso coupè 12.11 >	cp. porta post.	160717820	48,00	● 81780A6000	575	330	8	18	S1	S1
ix35 (LM, EL) 01.10 >	cp. porta post.	160717821	42,00	● 817702Y000	485	560	8	18	S5	S5
Matrix (FC) 06.01>08.10	cp. porta post.	160614553	36,00	● 8177017030	570	645	8	18	S1	S1
INNOCENTI										
Elba (146) 04.86>12.96	cp. porta post.	160618522	42,40	● 7516691	524	520	8	18	S1	S1
Mille 1994>1995	cp. porta post.	160618588	42,40	● 7636049	568	280	8	18	S1	S1
Mini 90 - 120 05.74>02.82	cp. porta post.	160618024	35,00	● 53471007	522	230	8	18	O2	O4
Mini 3 Cilindri 1990>	cp. porta post.	160618024	35,00	● 53471007	522	230	8	18	O2	O4
JEEP										
Cherokee (XJ) 10.84>09.01	cp. porta post.	160633681	101,00	● G0004296	600	750	10	22	S3	S3
Compass (MK49) 08.06>	cp. porta post.	160733822	40,00	● 5109514AB	525	585	8	18	S1	S1
Gran Cherokee II (WJ, WG) 10.98>09.05	cp. porta post.	160633085	91,60	● 55317022AC	480	650	10	22	X	X
Gran Cherokee III (WH, WK) 06.05>12.10	cp. porta post.	160733781	92,00	● 55394322AA	508	585	10	22	X	X
Grand Cherokee IV (WK, WK2) 11.10 >	cp. porta post.	160733824	50,00	● 55113632AA	722	730	10	22	S1	S1
Renegade (BU) 07.14>	cp. porta post.	160733825	44,00	● 520176510	498	460	8	18	S1	S1
KIA										
Cee'd (ED) 2 volumi 12.06>	cp. porta post.	160755826	40,00	● 817701H010	405	490	8	18	S5	S5
Rio II (JB) 03.05>	cp. porta post.	160755827	46,00	● 817701G000	490	380	8	18	S5	S5
Sorento (JC) 08.02>	cp. porta post.	160655276	76,00	● 817813E010	545	620	8	18	S5	S5
Sorento (JC) lunotto 08.02>	cp. porta post.	160655274	68,00	● 871803E000	360	100	8	18	S5	S5
Sportage (SL) 07.10>	cp. porta post.	160755828	42,00	● 817703W000	455	570	8	18	S5	S5
LADA										
Niva (2121) 12.76>03.95	cp. porta post.	160621047	36,00	● 21086308015	435	280	8	18	P2	P2
Samara (2108, 2109) 07.86>03.99	cp. porta post.	160621564	45,80	● 21216308015	457	350	8	18	P2	P2
LANCIA										
Beta (828B) 1300 - 1600 08.73>07.82	cp. porta post.	160622014	34,60	●	255	320	8	18	O2	O2
Beta HPE (828BF) 05.76>09.84	cp. porta post.	160622015	36,00	●	353	650	8	18	O2	O2
Dedra (835) 01.89>07.99	cp. baule	160622511	36,60	● 824372560	266	450	8	18	S2	S2
Dedra (835) station wagon 07.94>07.99	cp. porta post.	160622576	36,60	● 467250280	525	380	8	18	S1	S1

I prodotti contrassegnati dal simbolo ▼ si intendono ad esaurimento scorte.

LA: lunghezza totale (mm) **ØT:** diametro tubo (mm) **AS:** attacco stelo **AT:** attacco tubo **ØS:** diametro stelo (mm) **F:** carica in Newton

Attacco speciale:
X

Occhio



01 ø 6

02 ø 8

03 ø 8

04 ø 8

05 ø 8

06 ø 10

07 ø 8

08

09 ø 8

MODELLO E ANNO	APPLICAZIONE	CODICE	PREZZO €	O.E.M.	LA	F	ØS	ØT	AS	AT
segue LANCIA										
Delta I (831AB0)	09.79>05.93	cp. porta post.	160622509	38,60	823366870	503	430	8	18	S3 S3
Delta II (836) Spoiler	06.93>02.95	cp. porta post.	160622590	42,40	82473205	363	800	8	18	S1 S1
Delta II (836)	03.95>09.99	cp. porta post.	160622510	36,60	464337020	367	670	8	18	S1 S1
Delta III (844)	09.08>	cp. porta post.	160722450	48,60	51809199	645	300	8	18	S1 S1
Kappa (838)	10.94>10.01	cp. cofano	160622514	45,80	824862830	578	440	8	18	S1 S1
Kappa (838A)	10.94>10.01	cp. baule	160622513	42,40	464295070	282	500	8	18	S1 S1
Kappa (838B) station wagon	07.96>10.01	cp. porta post.	160622591	42,40	46309135	565	410	8	18	S1 S1
Lybra (839)	07.99>10.05	cp. cofano	160622719	34,60	46763101	402	280	8	18	S6 S6
Lybra (839AX) berlina	07.99>10.05	cp. baule	160622718	34,00	464284380	290	380	8	18	S5 S5
Lybra (839BX) station wagon	07.99>10.05	cp. porta post.	160622720	40,00	464538350	384	560	8	18	S1 S1
Musa (350)	10.04>	cp. porta post.	160613217	35,80	46830389	473	480	8	18	S6 S5
Phedra (179)	09.02>11.10	cp. porta post.	160613219	31,80	1489342080	630	500	8	18	S5 S5
Prisma (831AB0)	03.83>06.89	cp. baule	160622512	35,00	823804530	330	340	8	18	S2 S2
Thema (834) station wagon	09.87>03.95	cp. porta post.	160622515	37,60	82430552	600	380	8	18	S1 S1
Trevi (828DB)	05.80>01.87	cp. baule	160622016	37,60		229	390	8	18	O2 O2
Y (840A)	11.95>09.03	cp. porta post.	160622589	39,60	7792951	483	300	8	18	S1 S1
Ypsilon (843)	10.03>12.11	cp. porta post.	160622224	40,80	46817935	480	420	8	18	S5 S5
Zeta	05.95>11.95	cp. porta post.	160630713	40,60	8731A3	627	570	8	18	S1 S1
Zeta	11.95>09.02	cp. porta post.	160630714	40,60	8731C1	610	560	8	18	S1 S1
Zeta	11.95>09.02	cp. porta post.	160622577	42,40	9618278480	627	630	8	18	S1 S1
LAND ROVER										
Freelander 2 (FA)	10.06>10.14	cp. porta post.	160723831	46,00	6H52406A10AG	536	505	8	18	S1 S1
Range Rover Classic	07.70>07.94	cp. porta post.	160623745	43,00	MXC7833	495	225	8	18	S1 S1
Range Rover III (LM)	05.05>08.12	cp. porta post.	160723832	42,00	XH42406A10AA	515	580	8	18	S1 S1
MAZDA										
2 (DY)	04.03>	cp. porta post.	160624225	51,00	DD1062620A	565	500	8	18	S6 S1
2 (DE)	10.07>	cp. porta post.	160724833	46,00	D65162620A	505	340	8	18	S1 S1
3 (BK)	10.03>06.09	cp. porta post.	160624226	45,40	BP4K62620D	540	390	8	18	S6 S6
3 (BL)	06.09>	cp. porta post.	160724451	46,00	BBM456930A	280	395	8	18	S1 S1
323 III (BF)	07.85>05.89	cp. porta post. DX porta post. SX	160624095	98,80	8AB262620 8AB263620	667 667	290 290	8 8	18 18	P2 X P2 X
323 III (BW) station wagon	05.86>03.93	cp. porta post. DX porta post. SX	160624104	89,60	8BB862620 8BB863620	666 666	350 350	8 8	18 18	P2 X P2 X
323 IV (BG) F 5 porte	06.89>08.94	cp. porta post. DX porta post. SX	160624098	103,20	8AB862620 8AB863620	491 491	380 380	10 10	22 22	P2 X P2 X
323 IV (BG)	08.89>10.94	cp. porta post.	160624097	98,80	8AB462620	535	350	8	18	P2 X
323 V (BA) F	09.94>09.98	cp. porta post. DX porta post. SX	160624102	103,20	B01C62620 B01C63620	542 542	380 380	10 10	22 22	P2 X P2 X
323 V (BA) C	09.94>09.98	cp. porta post. DX porta post. SX	160624100	103,20	BC1C62620 BC1C63620	532 532	400 400	10 10	22 22	P2 X P2 X
323 V (BA) P	09.94>09.98	cp. porta post. DX porta post. SX	160624093	98,80	B22H62620A B22H63620A	573 573	350 350	10 10	22 22	P2 X P2 X
323 VI (BJ) F	09.98>05.04	cp. porta post. DX porta post. SX	160624746	103,20	B25R63620A B25R62620A	585 585	350 350	10 10	22 22	S3 X S3 X
5 (CR19)	03.05>	cp. porta post. DX porta post. SX	160624363	98,00	C23562620A C23563620A	555 555	480 480	8 8	18 18	S3 X S3 X
626 II (GC)	03.83>05.87	cp. porta post.	160624106	93,60		704	320	8	18	P2 X
626 III (GV) station wagon	03.88>09.97	cp. porta post. DX porta post. SX	160624111	103,20	8BG562620 8BG563620	621 621	470 470	10 10	22 22	X X X X
626 IV (GE)	08.91>04.97	cp. porta post. DX porta post. SX	160624107	93,60	GABA62620A GABA63620B	495 495	650 650	8 8	18 18	P2 X P2 X
626 IV (GE)	01.92>04.97	cp. porta post. DX porta post. SX	160624748	103,20	GD8V62620B GD8V63620B	496 496	730 730	10 10	22 22	S1 X S1 X
626 V (GF)	05.97>12.99	cp. porta post. DX porta post. SX	160624109	103,20	GE4V62620D GE4V63620D	609 609	540 540	10 10	22 22	X X X X
626 V (GW) station wagon	02.98>01.00	cp. porta post. DX porta post. SX	160624750	103,20	G14S62620C G14S63620C	585 585	510 510	10 10	22 22	S3 X S3 X
Demio (DW)	08.98>	cp. porta post. DX porta post. SX	160624277	84,00	D20262620A D20263620A	600 600	350 350	8 8	18 18	X X X X
MPV II (LW)	09.99>02.06	cp. porta post. DX porta post. SX	160624279	90,00	LC6262620C LC6263620C	620 620	640 640	10 10	27 27	P2 X P2 X
MERCEDES										
Classe A (W168)	07.97>08.04	cp. porta post.	160625672	42,80	A1689800164	538	400	8	18	S1 S1
Classe A (W169)	09.04>06.12	cp. porta post.	160625365	45,60	A1697400045	500	430	8	18	S5 S5
Classe B (W245)	03.05>11.11	cp. porta post.	160725452	48,00	A1699800864	540	450	8	22	S1 S5
Classe B (W246)	11.11>	cp. porta post.	160725841	42,00	A2469800564	520	540	8	18	S6 S6
Classe C (W202, T202)	06.93>08.00	cp. cofano	160625283	39,00	A2028800029	265	1040	10	22	X X
Classe C (S203) station wagon	03.01>	cp. porta post.	160725834	38,00	A2037400045	512	470	8	18	S6 S1
Classe C (S204) station wagon	08.07>	cp. porta post.	160725835	40,00	A2047400145	474	510	8	18	S1 S6
Classe E (S124) station wagon	09.85>06.96	cp. porta post.	160625030	97,20	A1249800164	280	1780	14	28	O8 O6
Classe E (W210, S210)	05.95>03.03	cp. cofano	160625114	87,40	A2108800429	458	550	8	18	S3 S3
Classe E (S211) station wagon	03.03>	cp. porta post.	160725836	52,00	A2119800364	349	1300	10	24	S4 S4
Classe ML (W163)	02.98>06.05	cp. porta post.	160625193	49,40	A1637400345	640	510	8	18	S1 S1
Classe M (W164)	07.05>	cp. porta post.	160725838	46,00	A1647400145	558	725	10	22	S1 S6
Vaneo (W414)	02.02>07.05	cp. porta post.	160625366	50,00	A4149800064	695	640	8	18	S1 S1
Viano (W639)	09.03>	cp. porta post.	160625367	50,40	A6399800364	667	755	10	22	S1 S1
Vito I (W638)	02.96>10.03	cp. porta post.	160625677	98,40	A6389800364	775	630	10	28	S1 S1
Vito II (W639)	09.03>	cp. porta post.	160625367	50,40	A6399800364	667	755	10	22	S1 S1
MINI										
Mini (R50-R53)	06.01>09.06	cp. porta post.	160608213	37,00	41626801258	498	330	8	18	S1 S1
Mini (R56)	10.06>	cp. porta post.	160708453	50,00	51247148902	495	370	8	18	S1 S1

I prodotti contrassegnati dal simbolo ▼ si intendono ad esaurimento scorte.

LA: lunghezza totale (mm) ØT: diametro tubo (mm) AS: attacco stelo AT: attacco tubo ØS: diametro stelo (mm) F: carica in Newton



MODELLO E ANNO	APPLICAZIONE	CODICE	PREZZO €	O.E.M.	LA	F	ØS	ØT	AS	AT
segue MINI										
Mini (R60) Countryman	06.10>	cp. porta post.	160708844	42,00	51249801386	493	460	8	18	S1 S5
MITSUBISHI										
Colt II (C1_A)	02.84>04.88	cp. porta post. DX	160626115	97,40	MB112868	685	135	8	18	X X
		porta post. SX			MB112869	685	135	8	18	X X
Colt III (C5_A)	04.88>05.92	cp. porta post. DX	160626117	97,40	MB537086	573	280	8	18	X X
		porta post. SX			MB537085	573	280	8	18	X X
Colt V (CJ_A)	09.95>09.00	cp. porta post. DX	160626119	86,60	MB264532	468	250	8	18	P2 X
		porta post. SX			MB264531	468	250	8	18	P2 X
Colt VI (Z30)	06.04>	cp. porta post.	160626368	46,60	MR959247	590	460	8	18	S1 S1
Outlander II (CV_W)	11.06>	cp. porta post.	160603721	39,00	5802A007/5802A304	502	420	8	18	S5 S6
Space Runner (N1_W, N2_W)	10.91>08.99	cp. porta post. DX	160626128	107,20	MB537521	517	500	10	22	X X
		porta post. SX			MB537520	517	500	10	22	X X
Space Wagon (N3_W, N4_W)	10.91>10.98	cp. porta post. DX	160626130	107,20	MB537550	500	500	10	22	X X
		porta post. SX			MB537549	500	500	10	22	X X
NISSAN										
Almera (N15)	07.95>03.00	cp. porta post. SX	160628287	101,80	904500N000	485	355	8	18	X X
		porta post. DX			904510N000	485	355	8	18	X X
Almera Tino (V10)	08.00>	cp. porta post.	160628289	89,40	90450BU000	520	530	8	18	S3 S3
Juke	06.10>	cp. porta post.	160728454	50,00	90450-1KA1A	650	260	8	18	S5 S5
Micra II (K11)	08.92>02.03	cp. porta post.	160628754	79,00	904504F111	548	290	8	18	S1 S1
Micra III (K12)	01.03>	cp. porta post.	160628229	44,00	90450AX610	500	360	8	18	S1 S1
Micra IV (K13)	17>	cp. porta post.	160728899	37,10	1Q0827550B	500	380	8	18	S1 S1
Note (E11)	03.06>	cp. porta post.	160628369	46,60	90450-9U00A	590	440	8	18	S5 S5
Primera (P10) 4 porte	06.90>06.96	cp. porta post.	160628603	97,20	8443050J25	272	470	10	22	P2 P2
Primera (P10) 5 porte	06.90>06.96	cp. porta post.	160628756	81,20	9045298J00	593	480	8	18	S1 S1
Primera (P11) 4 porte	06.96>07.02	cp. porta post.	160628757	81,20	844302F010	315	430	8	18	S1 S1
Primera (P11) 5 porte	06.96>07.02	cp. porta post.	160628290	52,20	904522F705	520	730	8	18	S1 S1
Primera (WP11) station wagon	04.98>03.02	cp. porta post.	160628291	89,40	904538F810	527	660	8	18	S6 S5
Primera (P12) 4 porte	03.02>	cp. porta post.	160628370	44,80	84430AV600	268	510	8	18	S1 S1
Qashqai (J10)	02.07>	cp. porta post.	160728455	50,00	90450-JD01B	515	355	8	18	S5 S5
Qashqai (J11, J11_)	02.14>	cp. porta post.	160728845	40,00	904504EA1A	527	425	8	18	S5 S6
Vanette (C120)	01.78>06.87	cp. porta post.	160628141	97,20	90451G2701	608	400	10	22	X X
Vanette (C220)	10.86>12.95	cp. porta post.	160628142	97,20	9045004C25	790	350	10	22	X P2
X-Trail (T31)	06.07>	cp. porta post.	160728846	46,00	90450-JG40A / 90451-JG40A	580	560	8	18	S1 S1
OPEL										
Agila A (H00)	09.00>	cp. porta post.	160629056	34,40	4705436	645	475	8	18	S5 S5
Agila B (H08)	04.08>	cp. porta post.	160613597	41,20	93193386	506	420	8	18	S5 S5
Astra F berlina	09.91>03.98	cp. porta post.	160629560	38,60	90341282	595	350	8	18	S3 S3
Astra F station wagon	09.91>03.98	cp. porta post.	160629561	38,00	90132720	513	550	8	18	S1 S1
Astra G berlina	04.98>03.04	cp. porta post.	160629661	40,20	90521517	538	430	8	18	S1 S1
Astra G station wagon	04.98>08.04	cp. porta post.	160629695	39,60	90559245	567	500	8	18	S6 S6
Astra H berlina	03.04>	cp. porta post.	160629296	38,00	24463829	425	450	8	18	S6 S5
Astra H station wagon	08.04>	cp. porta post.	160629297	38,00	13122695	473	570	8	18	S1 S1
Astra J berlina	12.09>	cp. porta post.	160729456	50,00	13258179	585	400	8	18	S1 S1
Calibra	03.90>08.97	cp. baule	160629562	42,40	132717	570	420	8	18	S1 S1
Corsa A	09.82>03.93	cp. porta post.	160629660	42,40	90127138	615	610	10	22	S4 S4
Corsa A	09.82>03.93	cp. porta post.	160629558	38,60	90127137 - 132713	615	610	8	18	S3 S3
Corsa B 3 porte	02.93>11.00	cp. porta post.	160629605	40,60	90481270 - 132724	540	370	8	18	S1 S1
Corsa B 5 porte	02.93>11.00	cp. porta post.	160629604	40,60	90388707 - 132725	565	360	8	18	S1 S1
Corsa C (F08, F68)	09.00>12.06	cp. porta post.	160629207	39,00	9114311	470	350	8	18	S1 S1
Corsa D	01.07>	cp. porta post.	160629371	44,80	13182537	602	240	8	18	S6 S6
Kadett E	08.84>07.91	cp. porta post.	160629556	39,60	90191627	535	440	8	18	S1 S1
Kadett E station wagon	08.84>07.91	cp. porta post.	160629557	40,60	90132711	702	370	8	18	S1 S1
Meriva	05.03>05.10	cp. porta post.	160629231	45,40	5132262	543	520	8	18	S1 S1
Meriva B	06.10>	cp. porta post.	160729457	54,00	13338367	482	700	8	18	S1 S5
Mokka	06.12>	cp. porta post.	160729848	40,00	132111	618	370	8	18	S5 S5
Omega A S.W.	09.86>05.94	cp. porta post.	160629559	40,60	90246620	513	540	8	18	S1 S1
Omega B S.W.	05.94>07.03	cp. porta post.	160629758	40,60	90379081 - 132675	506	620	8	18	S1 S1
Tigra	07.94>12.00	cp. porta post.	160629606	45,80	90481180 - 132726	828	355	8	18	S1 S1
Vectra A Coupé	08.88>11.95	cp. porta post.	160629563	44,80	90227934 - 132715	473	570	8	18	S1 S1
Vectra B	10.95>03.02	cp. cofano	160629759	42,60	90463721 - 1180402	250	850	8	18	S1 S1
Vectra B berlina	08.95>07.98	cp. baule	160629760	42,60	90463749 - 132727	470	560	8	18	S1 S1
Vectra B berlina	08.98>03.02	cp. baule	160629761	42,60	09152393 - 132681	470	600	8	18	S1 S1
Vectra B S.W.	08.95>03.02	cp. porta post.	160629762	42,60	90463781 - 132731	570	540	8	18	S1 S1
Vectra C berlina 3 volumi	04.02>	cp. porta post.	160629299	41,00	09177081	265	520	8	18	S1 S1
Vectra C berlina 2 volumi	04.02>	cp. porta post.	160629374	44,00	09180255	475	600	8	18	S1 S5
Vectra C S.W.	10.03>	cp. porta post.	160629375	44,80	13247867 - 13101335	570	570	8	18	S1 S1
Vivaro	08.01>	cp. porta post.	160629300	54,20	4414419	905	730	10	22	S3 S3
Zafira (F75)	04.99>06.05	cp. porta post.	160629143	40,00	90579440	540	590	8	18	S1 S1
Zafira B (A05)	07.05>	cp. porta post.	160729458	54,00	13128759	505	610	8	18	S1 S1
Zafira Tourer C (P12)	10.11>	cp. porta post.	160729850	44,00	13387067 / 132089	485	660	8	22	S1 S1
PEUGEOT										
104 berlina	10.75>06.83	cp. porta post.	160630650	42,40	873145	640	360	8	18	S1 S1
106 (1A, 1C)	09.91>04.96	cp. porta post.	160630525	37,00	873185	585	310	8	18	S1 S1
107	06.05>	cp. porta post.	160709434	45,00	8731L0	550	305	8	18	S5 S5
205 (741 A/C, 20 A/C)	02.83>09.98	cp. porta post.	160630524	36,40	873155	613	340	8	18	S1 S1
206 (2A/C) berlina	09.98>	cp. porta post.	160630696	42,40	8731E6	520	360	8	18	S5 S5
206 (2D) CC	09.00>	cp. porta post.	160630376	44,00	8731F2	450	590	8	18	S1 S1
206 (2E/K) station wagon	07.02>	cp. porta post.	160630377	44,80	8731G5	580	535	8	18	S5 S5
206 + (T3E)	01.09>	cp. porta post.	160630696	42,40	8731E6	520	360	8	18	S5 S5
207 (WA, WC) berlina	09.05>	cp. porta post.	160630378	43,40	8731L7	505	330	8	18	S5 S5

I prodotti contrassegnati dal simbolo ▼ si intendono ad esaurimento scorte.

LA: lunghezza totale (mm) ØT: diametro tubo (mm) AS: attacco stelo AT: attacco tubo ØS: diametro stelo (mm) F: carica in Newton

Attacco speciale: **X**

01 ø 6 02 ø 8 03 ø 8 04 ø 8 05 ø 8 06 ø 10 07 ø 8 08 09 ø 8

MODELLO E ANNO	APPLICAZIONE	CODICE	PREZZO €	O.E.M.	LA	F	ØS	ØT	AS	AT
segue PEUGEOT										
207 (WK) station wagon 06.07>	cp. porta post.	160613622	43,60 ●	8731Q0	507	520	8	18	S5	S5
208 03.12>	cp. porta post.	160730851	40,00 ●	1609616580	468	405	8	18	S5	S5
305 (581 A/M) berlina 10.77>07.90	cp. baule	160630651	42,40 ●	862215	265	750	8	18	S1	S1
305 (581 D/E) Break 07.82>12.88	cp. porta post.	160630649	42,40 ●	8731A9	635	360	8	18	S1	S1
306 (7A/C) 3/5 porte 06.94>04.01	cp. porta post.	160630607	40,60 ●	873193	600	300	8	18	S6	S6
306 (7B) 4 porte 06.94>04.01	cp. baule	160630697	38,60 ●	8731A2	290	290	6	15	S1	S1
306 (7E, N3/5) Break 05.97>04.01	cp. porta post.	160630698	36,60 ●	8731E1	625	400	8	18	S5	S5
307 (3A/C) berlina 08.00>	cp. porta post.	160630208	36,80 ●	792515	460	430	8	20	S1	S1
307 (3E/H) station wagon 03.02>	cp. porta post.	160630209	35,60 ●	8731F8	493	600	8	20	S3	S3
308 (4A, 4C) berlina 09.07>	cp. porta post.	160730459	46,00 ●	8731Q6	455	410	8	18	S5	S5
308 II berlina 09.13>	cp. porta post.	160730855	44,00 ●	9807899380	502	420	8	18	S5	S5
309 II (3A/C) 08.89>12.93	cp. porta post.	160630528	39,60 ●	873178	565	440	8	18	S1	S1
405 (15E, 4E) 10.88>10.96	cp. porta post.	160630608	42,40 ●	873183	420	730	8	18	S1	S1
406 (8B) berlina 10.95>12.98	cp. baule	160630647	39,60 ●	8731A7	493	230	8	18	S1	S1
406 (8E/F) Break 10.96>10.04	cp. porta post.	160630648	44,80 ●	8731C5	555	550	8	18	S1	S1
407 (6D) berlina 05.04>	cp. baule	160630301	41,00 ●	8731K4	320	470	8	18	S1	S1
504 (D,F) Break 04.71>07.86	cp. porta post.	160630034	48,60 ●	873143	600	450	8	18	O2	O2
504 (D,F) station wagon 04.82>12.93	cp. porta post.	160630526	44,80 ●		600	450	8	18	S3	S3
505 (551A) berlina 05.79>10.82	cp. baule	160630048	43,00 ●	862212	475	360	8	18	O2	O4
505 (551A) berlina 11.82>06.83	cp. baule	160630049	43,00 ●	862213	415	360	8	18	O2	O4
505 (551D) Break 07.83>09.92	cp. porta post.	160630527	42,40 ●	873151	640	470	8	18	S1	S1
508 SW 11.10>	cp. porta post.	160730856	38,00 ●	8731W3	550	640	8	18	S5	S5
604 (561A) 08.77>07.87	cp. porta post.	160630050	48,00 ●	862210	315	520	8	18	O2	O4
605 (6B) 10.89>09.99	cp. cofano	160630652	48,60 ●	792505	200	850	8	18	S1	S1
607 (9D) 02.00>	cp. porta post.	160630303	43,00 ●	8731F9	500	350	8	18	S1	S1
806 (221) 06.94>11.95	cp. porta post.	160630713	40,60 ●	8731A3	627	570	8	18	S1	S1
806 (221) 11.95>08.02	cp. porta post.	160630714	40,60 ●	8731C1	610	560	8	18	S1	S1
807 (E) 06.02>	cp. porta post.	160630379	45,60 ●	8731G6	630	510	8	18	S1	S1
1007 (KM) 04.05>	cp. porta post.	160709434	45,00 ●	8731J3	550	305	8	18	S5	S5
2008 03.13>	cp. porta post.	160730852	42,00 ●	9678317180	380	730	8	22	S5	S5
3008 06.09>	cp. porta post.	160730853	40,00 ●	8731T4	450	385	8	18	S1	S1
4007 02.07>	cp. porta post.	160730854	40,00 ●	8731Q1	492	420	8	18	S1	S1
5008 06.09>	cp. porta post.	160730460	49,60 ●	8731V2	590	590	8	18	S1	S1
Bipper (AA) 02.08>	cp. porta post.	160713426	47,00 ●	8731V0	600	670	8	18	S5	S5
Partner (5F) 06.96>	cp. porta post.	160609643	48,60 ●	8731E0	698	660	8	18	S1	S1
Ranch (5) 06.96>	cp. porta post.	160609643	48,60 ●	8731E0	698	660	8	18	S1	S1
PIAGGIO										
Porter 1992>	cp. porta post.	160633699	51,20 ●		695	590	8	18	S1	S1
RENAULT										
Captur 06.13>	cp. porta post.	160733860	42,00 ●	844301324R	475	590	8	22	S5	S5
Clio I (BC/57) 01.91>08.98	cp. porta post.	160633534	36,00 ●	7700800311	475	390	8	18	S1	S1
Clio II (B/C/BO/1/CB0) 03.98>05.05	cp. porta post.	160633653	35,00 ●	7700842256B	415	340	8	18	S5	S5
Clio III (BR/CR) 06.05>	cp. porta post.	160633380	42,20 ●	8200299546	450	385	8	18	S5	S5
Clio IV 11.12>	cp. porta post.	160733861	42,00 ●	844308661R	470	480	8	18	S5	S5
Clio Grandtour (KR0/1) 02.08>	cp. porta post.	160733461	51,00 ●	8200583852	470	580	8	18	S3	S5
Clio IV Grandtour 01.13>	cp. porta post.	160733863	38,00 ●	844307620R	435	740	8	22	S5	S5
Espace II (J63) 01.91>10.96	cp. porta post.	160633592	39,60 ●	6025106762	537	550	8	18	S1	S1
Espace III (JE) 11.96>10.02	cp. porta post.	160633763	41,40 ●	6025300735	560	730	8	18	S1	S1
Espace IV (JKO) 09.02>12.03	cp. porta post.	160633210	59,60 ●	8200021974	730	760	10	22	S5	S5
Fuego 02.80>10.85	cp. porta post.	160633654	40,20 ●	7701366528	545	400	8	18	S1	S1
Grand Scenic III (JZ0/1) 02.09>	cp. porta post.	160733858	50,00 ●	904510005R	662	535	10	22	S1	S1
Kangoo (FC/KC) 04.98>	cp. porta post.	160633054	39,00 ●	7700303186	690	630	10	22	S3	S3
Kangoo (KW0/1) 02.08>	cp. porta post.	160733462	68,00 ●	8200497806	830	610	10	22	S5	S5
Laguna I (B56) berlina 12.93>03.01	cp. porta post.	160633610	43,40 ●	7700842152	596	500	10	22	S1	S3
Laguna I (K56) Grandtour 09.95>03.01	cp. porta post.	160633611	43,40 ●	7700838005	475	625	8	18	S1	S3
Laguna II (B74) berlina 03.01>	cp. porta post.	160633764	43,40 ●	820000902	513	535	8	18	S1	S1
Laguna II (K74) Grandtour 03.01>	cp. porta post.	160633305	42,00 ●	8200025317	538	455	8	18	S5	S5
Megane I (BA) berlina 09.95>12.02	cp. porta post.	160633612	42,00 ●	7700828451	445	480	8	18	S1	S1
Megane I (DA) Coach/Coupè 10.96>11.02	cp. porta post.	160633031	42,40 ●	7700838487	180	480	8	18	S1	P5
Megane I (KA) Grandtour 03.99>09.03	cp. porta post.	160633234	49,40 ●	7700418621	465	425	8	18	S5	S5
Megane I (LA) Classic 03.99>09.03	cp. porta post.	160633306	41,00 ●	7700838612	300	410	8	18	S5	S5
Megane II (B/CM) berlina 09.02>	cp. porta post.	160633232	45,40 ●	8200051750	420	500	8	18	S1	S1
Megane II (LM) 3 volumi 09.03>	cp. porta post.	160633307	41,00 ●	8200119497	345	350	8	18	S1	S1
Megane II (KM) Grandtour 09.03>	cp. porta post.	160733476	46,00 ●	8200119498	545	500	8	18	S5	S6
Megane III (BZ0/1) berlina 11.08>	cp. porta post.	160733864	38,00 ●	904510001R	432	570	8	18	S1	S1
Megane III (DZ0/1) Coupè 11.08>	cp. porta post.	160733859	48,00 ●	904510002R	665	270	8	18	S1	S1
Megane III (KZ0/1) Grandtour 11.08>	cp. porta post.	160733435	51,00 ●	844300009R	480	700	8	18	S1	S1
Megane Scenic I (JA) 01.97>10.99	cp. porta post.	160633712	36,00 ●	7700828454	595	515	8	18	S1	S1
Megane Scenic I (JA) RX4 09.99>08.03	cp. porta post.	160633765	43,40 ●	7700354323	400	190	10	22	S3	S3
Megane Scenic I (JA) RX4 09.99>08.03	cp. porta post.	160633766	43,40 ●	7700354322	428	135	8	18	S1	S1
Modus (JP) 12.04>	cp. porta post.	160629231	45,40 ●	8200219322	543	520	8	18	S1	S1
R 5 Supercinque (B/C40) 10.84>12.96	cp. porta post.	160633532	44,80 ●	7700756056	702	290	8	18	S3	S3
R 11 (B/C37) 03.83>12.88	cp. porta post.	160633539	42,40 ●	7700765226	433	740	8	18	S1	S1
R 14 (R121) 05.76>12.83	cp. porta post.	160633541	38,60 ●	7701348723	612	225	8	18	S3	S3
R 18 (R135) Break 05.79>07.86	cp. porta post.	160633655	48,60 ●	77000366525	610	350	8	18	S1	S1
R 19 (B/C 53) Back Door 04.92>12.95	cp. porta post.	160633535	42,40 ●	7700818237	500	460	8	18	S1	S1
R 19 (B/C 53) Back Door Sport 11.88>12.95	cp. porta post.	160633536	42,40 ●	7700799027	500	580	8	18	S1	S1
R 19 (L53) Chamade Sport 04.89>04.92	cp. baule	160633537	42,40 ●	7700811570	310	480	8	18	S1	S1
R 19 (L53) Chamade 04.92>12.95	cp. porta post.	160633656	42,40 ●	7700824817	310	710	8	18	S1	S1
R 19 (L53) Chamade 04.92>12.95	cp. baule	160633538	42,40 ●		310	650	8	18	S1	S1
R 21 (K48) Nevada 03.86>08.94	cp. porta post.	160633540	42,40 ●	7700785587	485	645	8	18	S1	S1

I prodotti contrassegnati dal simbolo ▼ si intendono ad esaurimento scorte.

LA: lunghezza totale (mm) ØT: diametro tubo (mm) AS: attacco stelo AT: attacco tubo ØS: diametro stelo (mm) F: carica in Newton



MODELLO E ANNO	APPLICAZIONE	CODICE	PREZZO €	O.E.M.	LA	F	ØS	ØT	AS	AT
segue RENAULT										
Safrane (B54)	04.92>12.00	cp. cofano	160633609	43,40	7700812193	540	253	8	18	S1 S1
Scenic I (JA)	09.99>06.03	cp. porta post.	160633712	36,00	7700828454	595	515	8	18	S1 S1
Scenic I (JA) - lunotto post.	09.99>06.03	cp. porta post.	160633308	41,00	7700430022	460	100	8	18	S3 S3
Scenic II (JM) - lunotto fisso	06.03>	cp. porta post.	160633381	43,40	8200377199	518	625	8	18	S1 S1
Scenic II (JM) - lunotto apribile	06.03>	cp. porta post.	160633382	42,20	8200119500	520	640	8	18	S1 S1
Trafic I (P)	09.80>02.89	cp. porta post.	160633699	51,20	7700691359	695	590	8	18	S1 S1
Trafic II (FL, JL)	09.01>	cp. porta post.	160629300	54,20	8200162697	905	730	10	22	S3 S3
Twingo I / II (C06)	03.93>05.07	cp. porta post.	160633533	36,60	7700815135	453	740	8	18	S1 S1
ROVER										
45 (RT)	02.00>	cp. porta post.	1606335671	40,60	BHE140010	515	445	8	18	S5 S5
200 (XH, XW) escl. GTi	03.85>10.95	cp. porta post.	1606335614	40,60	GST120, BHE38025	682	380	8	18	S1 S1
200 (XH, XW) incl. GTi spoiler	09.85>10.95	cp. porta post.	1606335700	45,40	BHE38017	687	390	8	18	S3 S3
400 (RT)	05.95>03.00	cp. porta post.	1606335671	40,60	BHE140010	515	445	8	18	S5 S5
400 (XW) Tourer	09.93>11.98	cp. porta post.	1606335613	40,60	BHE380260	568	330	8	18	S1 S1
800 (XS)	10.92>02.99	cp. baule	160635144	42,40	BHE41004	605	520	8	18	S1 S3
MG ZS	07.01>	cp. porta post.	1606335671	40,60	BHE140010	515	445	8	18	S5 S5
SAAB										
99	09.74>12.84	cp. porta post.	160636145	47,40	9233727	497	600	8	18	O2 O2
900 I Coupè	09.78>06.94	cp. porta post.	160636145	47,40	9233727	497	600	8	18	O2 O2
900 I Coupè (con spoiler)	09.78>09.93	cp. porta post.	160636146	47,40	9293580	500	660	8	18	O2 O2
900 II (YS3D)	07.93>02.98	cp. porta post.	160636767	47,40	4326468	566	480	8	18	S1 S1
900 II (YS3D) con spoiler	07.93>02.98	cp. porta post.	160636768	47,40	4324307	566	520	8	18	S1 S1
9000 CD	04.85>12.98	cp. baule	160636769	47,40	6976369	225	150	8	18	S1 S1
9000 (->ch.H1007931/H8000099)	09.84>12.98	cp. porta post.	160636147	47,40	9253964	670	400	8	18	O2 O2
9000 (ch.H1007931/H8000099->)	09.84>12.98	cp. porta post.	160636148	52,40	6956270	700	345	8	18	O2 O2
SEAT										
Alhambra (7V)	02.95>03.10	cp. porta post.	160614659	62,60	7M0827550F/D/G	596	775	10	27	S6 S1
Altea (5P1)	04.04>	cp. porta post.	160637312	41,20	5P0827550A	503	440	8	18	S1 S1
Altea XL (5P5, 5P8)	10.06>	cp. porta post.	160633232	45,40	5P8827550	420	500	8	18	S1 S1
Arosa (6H)	05.97>06.04	cp. porta post.	160637149	35,40	6X0827550	500	320	8	18	S1 S6
Cordoba I (6K2, C2)	02.93>06.99	cp. baule	160637616	39,60	6K5827550A	285	315	8	18	S1 S1
Cordoba I (6K5) Vario	09.96>06.99	cp. porta post.	160637312	41,20	6K0827550	503	440	8	18	S1 S1
Cordoba II (6K2)	06.99>10.02	cp. baule	160644383	42,60	6K5827550C	285	365	8	18	S1 S1
Cordoba II (6K5) Vario	06.99>12.02	cp. porta post.	160637312	41,20	6K0827550/A	503	440	8	18	S1 S1
Cordoba III (6L2)	10.02>	cp. baule	160637313	41,00	6L5827550B	285	600	8	18	S3 S1
Ibiza I (021A)	06.84>12.93	cp. porta post.	160637019	36,00	XO39503120	696	220	8	18	O2 O4
Ibiza II (6K1)	12.93>08.99	cp. porta post.	160637615	37,00	6K6827550	520	320	8	18	S1 S1
Ibiza III (6K1)	08.99>02.02	cp. porta post.	160637776	37,00	6K6827550A	530	350	8	18	S1 S1
Ibiza IV (6L1)	02.02>05.08	cp. porta post.	160637777	31,20	6L6827550B	500	470	8	18	S3 S1
Ibiza V (6J5)	03.08>	cp. porta post.	160737436	50,00	6J4827550B	560	290	8	18	S5 S5
Ibiza V (6J1) Sportscoupè	07.08>	cp. porta post.	160737865	38,00	6J3827550	450	455	8	18	S5 S6
Leon I (1M)	11.99>06.06	cp. cofano	160637706	36,00	1M0823359A	575	330	8	18	S1 S1
Leon I (1M)	11.99>06.06	cp. porta post.	160637707	36,00	1M6827550A	497	450	8	18	S5 S6
Leon II (1P1)	05.05>	cp. porta post.	160737437	37,00	1P0827550	500	340	8	18	S5 S1
Leon III (5F1)	09.12>	cp. porta post.	160737866	40,00	5F4827550A	494	410	8	18	S1 S6
Leon III (5F5) Sportscoupè	01.13>	cp. porta post.	160737867	40,00	5F3827550A	482	440	8	18	S1 S6
Leon III (5F8) station wagon	11.13>	cp. porta post.	160737868	40,00	5F9827550B	590	540	8	18	S1 S6
Malaga (023A)	11.84>12.93	cp. porta post.	160637035	39,60	XO39553290	252	340	8	18	O2 O4
Marbella (028)	08.86>10.98	cp. porta post.	160613001	31,80	XO39661930	547	240	8	18	O2 P1
Panda (141A)	10.80>12.86	cp. porta post.	160613001	31,80	XO44836580	547	240	8	18	O2 P1
Ronda/Ritmo (022A)	07.78>07.83	cp. porta post.	160613003	31,80	XO39401990	600	360	8	18	O2 O4
Ronda/Ritmo (022A)	07.83>11.88	cp. porta post.	160613004	34,60	XO39462450	602	360	8	18	O2 O4
Toledo I (1L)	01.91>03.99	cp. baule	160637625	44,80	1L0827550A	513	500	8	18	S1 S1
Toledo II (1M2)	04.99>05.06	cp. cofano	160637706	36,00	1M0823359A	575	330	8	18	S1 S1
Toledo II (1M2)	04.99>05.06	cp. baule	160637709	36,00	1M5827550B	283	530	8	18	S1 S1
Toledo III	10.04>05.09	cp. porta post.	160737779	53,00	5P5827550	882	240	8	22	S1 S5
SKODA										
Fabia (6Y5) Combi	01.00>12.07	cp. porta post.	160638722	31,00	6Y0827550A	440	600	8	18	S1 S1
Fabia (6Y3) 3 volumi	08.99>03.08	cp. porta post.	160638314	30,80	6Y5827550A	280	490	8	18	S1 S1
Fabia (5J)	01.07>	cp. porta post.	160738463	36,00	5J6827550	492	440	8	18	S1 S1
Fabia Combi (5J)	10.07>	cp. porta post.	160738463	36,00	5J6827550	492	440	8	18	S1 S1
Favorit (781)	05.89>10.93	cp. porta post.	160638770	37,00	441964420386	506	420	8	18	S6 S6
Favorit (787) Pick-up	12.92>06.97	cp. porta post.	160638150	37,00	441564420066	516	220	8	18	O2 O2
Felicia (6U1, 6U5)	10.94>06.01	cp. porta post.	160638675	37,00	6U08227551/A/B	530	450	8	18	S1 S6
Forman (785)	08.91>10.93	cp. porta post.	160638770	37,00	441964420386	506	420	8	18	S6 S6
Octavia (1U2) berlina	10.96>09.00	cp. porta post.	160709442	42,00	1U6827550/A/B/C	490	475	8	18	S5 S5
Octavia (1U2) berlina	09.00>09.04	cp. porta post.	160638708	37,00	1U6827550F	495	515	8	18	S6 S6
Octavia (1U5) Wagon	07.98>12.10	cp. porta post.	160638680	37,60	1U9827550A	410	550	8	18	S1 S1
Octavia (1Z3) berlina	02.04>	cp. porta post.	160638384	43,00	1Z5827550/B/C/D/E	585	440	8	18	S1 S1
Octavia (5E) berlina	11.12>	cp. porta post.	160738869	44,00	5E5827550L	500	575	8	18	S1 S1
Rapid (NH3) berlina	07.12>	cp. porta post.	160738870	42,00	5JA827550	520	560	8	18	S1 S1
Roomster (5J) incl. Praktik	05.06>	cp. porta post.	160738464	39,00	5J7827550	420	600	8	18	S5 S5
Superb (3T4)	03.08>	cp. porta post.	160738871	46,00	3T5827550	540	650	8	18	S1 S1
Yeti (5L)	05.09>	cp. porta post.	160738465	50,00	5L6827550	525	490	8	18	S5 S5
SMART										
City-Coupè (MC01)	07.98>01.04	cp. porta post.	160660752	36,00	113000013	305	130	6	15	S1 S1
Fortwo Coupè	01.07>	cp. porta post.	160760872	38,00	A4519880004	445	90	8	18	S6 S5
SUBARU										
Forester (SF)	08.97>09.02	cp. porta post. DX	160639315	90,80	60315FC201	635	380	10	22	P2 X
Forester (SF)		porta post. SX			60315FC211	635	380	10	22	P2 X

I prodotti contrassegnati dal simbolo ▼ si intendono ad esaurimento scorte.

LA: lunghezza totale (mm) **ØT:** diametro tubo (mm) **AS:** attacco stelo **AT:** attacco tubo **ØS:** diametro stelo (mm) **F:** carica in Newton

Attacco speciale: **X**

01 ø 6 02 ø 8 03 ø 8 04 ø 8 05 ø 8 06 ø 10 07 ø 8 08 09 ø 8

MODELLO E ANNO	APPLICAZIONE	CODICE	PREZZO €	O.E.M.	LA	F	ØS	ØT	AS	AT	
segue SUBARU											
Legacy II (BD, BG) Sw	09.94>11.98	cp. porta post. DX	160639151	93,40 ●	60330AC001	665	400	10	22	P2	X
		porta post. SX			60330AC011	665	400	10	22	P2	X
SUZUKI											
Alto I (SS80)	06.82>12.85	cp. porta post.	160640155	81,20 ●	76410 - 78000	462	190	8	18	X	X
Alto I (SS80)	06.82>12.85	cp. porta post.	160640156	86,60 ●	81860M70F1000	670	380	10	22	P2	P2
Alto II (EC)	01.86>11.93	cp. porta post.	160640156	86,60 ●	81860M70F1000	670	380	10	22	P2	P2
Alto III (EF)	09.94>06.02	cp. porta post.	160640156	86,60 ●	81860M70F1000	670	380	10	22	P2	P2
Jimmy (SJ410, SJ413)	09.81>08.90	cp. porta post.	160640051	40,60 ●	81860A80100	465	113	8	18	O2	O2
Samurai (SJ)	11.88>	cp. porta post.	160640051	40,60 ●	81860A80100	465	113	8	18	O2	O2
Swift I (AA)	02.85>12.89	cp. porta post.	160640051	40,60 ●	81860A80100	465	113	8	18	O2	O2
Swift II (EA, MA)	03.89>05.01	cp. porta post. DX	160640157	86,60 ●	81800 - 62831	610	190	8	18	X	P2
		porta post. SX			81800 - 62841	610	190	8	18	X	P2
Swift III (SG)	02.05>	cp. porta post. DX	160640389	138,20 ●	8180063811	440	380	8	18	X	P2
		porta post. SX			8180063821	440	380	8	18	X	P2
SX4	06.06>	cp. porta post.	160713427	52,00 ●	8186079J01	440	420	8	18	S1	S5
Vitara (ET, TA)	07.88>03.98	cp. porta post.	160640052	42,40 ●	8185185C00	590	100	8	18	X	X
Wagon R+ (EM)	02.98>05.00	cp. porta post.	160629056	34,40 ●	8185075F00000	645	475	8	18	S5	S5
Wagon R+ (MM)	05.00>	cp. porta post.	160640236	88,60 ●	8,19E+06	645	475	8	18	S5	S5
TOYOTA											
Auris (E15) berlina	03.07>	cp. baule	160742873	46,00 ●	6895002091	442	455	8	18	S1	S1
Auris (E18) berlina	10.12>	cp. baule	160742874	42,00 ●	6895002130	378	520	8	18	S5	S6
Avensis (T22)	09.97>04.03	cp. porta post.	160603198	44,80 ●	6895005040	502	530	8	18	S1	S1
Avensis (T22) station wagon	09.97>04.03	cp. porta post.	160642725	103,80 ●	6895005050	454	600	8	18	S1	S1
Avensis (AC) Verso	08.01>11.09	cp. porta post.	160642394	149,80 ●	6895044080	430	560	8	18	S3	S3
Aygo (B1)	07.05>	cp. porta post.	160709434	45,00 ●	68950-0H020	550	305	8	18	S5	S5
Carina E (T19) berlina	04.92>09.97	cp. porta post. DX	160642159	98,20 ●	6895005020	610	480	10	22	X	X
		porta post. SX			6896005010	610	480	10	22	X	X
Carina E (T19) SW	01.93>09.97	cp. porta post. DX	160642161	98,20 ●	6895005030	535	620	10	22	X	X
		porta post. SX			6896005030	535	620	10	22	X	X
Corolla (E7) SW	12.79>08.87	cp. porta post.	160642175	91,80 ●	6895019275	616	280	10	22	P2	P2
Corolla (E9)	07.87>06.93	cp. porta post. DX	160642163	89,20 ●	6895012201	658	320	10	22	P2	X
		porta post. SX			6896012021	658	320	10	22	P2	X
Corolla (E9) 3 porte	07.87>04.92	cp. porta post. DX	160642165	89,20 ●	6895019805	587	255	8	18	X	X
		porta post. SX			6895012241	587	255	8	18	X	X
Corolla (EE10) 3 porte	07.92>04.97	cp. porta post. DX	160642167	98,20 ●	6895019525	615	410	10	22	X	X
		porta post. SX			6896019525	615	410	10	22	X	X
Corolla (EE10) 5 porte	07.92>04.97	cp. porta post. DX	160642171	98,20 ●	6895019616	630	440	10	22	X	X
		porta post. SX			6896019616	630	440	10	22	X	X
Corolla (E10) station wagon	07.92>04.97	cp. porta post. DX	160642173	98,20 ●	6895019795	574	570	10	22	X	X
		porta post. SX			6896019485	574	570	10	22	X	X
Corolla (E11) 3 porte	04.97>01.99	cp. porta post. DX	160642169	89,20 ●	68950800057	474	400	10	22	X	P2
		porta post. SX			68960800057	474	400	10	22	X	P2
Corolla (E11) 3 porte	01.99>01.02	cp. porta post. DX	160642396	111,20 ●	6895080105	475	430	10	22	P2	X
		porta post. SX			6896019805	475	430	10	22	P2	X
Corolla (E11) 5 porte	04.97>01.02	cp. porta post. DX	160642398	138,20 ●	6895080055	495	570	10	22	X	S3
		porta post. SX			6896019685	495	570	10	22	X	S3
Corolla (E11) SW	04.97>01.02	cp. porta post. DX	160642322	95,20 ●	6895080043	720	310	8	18	X	X
		porta post. SX			6896019595	720	310	8	18	X	X
Corolla (E12)	01.02>	cp. porta post.	160642321	85,40 ●	6895002040	470	440	8	18	S5	S5
Corolla (E12) SW	01.02>02.07	cp. porta post.	160642324	95,20 ●	6895002080	433	585	8	18	S5	S5
Corolla (ZER, ZZE) Verso	03.04>03.09	cp. porta post.	160642325	85,40 ●	689600F011	530	545	8	18	S1	S1
Hi-Ace I (H) Van	02.77>03.83	cp. porta post.	160642176	89,20 ●	6897095A03	730	750	10	27	O8	O8
Hi-Ace II (H5) Van	03.83>11.89	cp. porta post.	160642177	89,20 ●	6897095J03	700	800	10	27	O8	O8
Hi-Ace III (H10) Van	08.89>08.95	cp. porta post.	160642178	89,20 ●	6897062510	742	795	10	27	O8	O8
Pic-Nic (XM10)	05.96>12.01	cp. porta post. DX	160642182	98,20 ●	6895044010	576	675	10	22	X	X
		porta post. SX			6895044010	576	675	10	22	X	X
Verso	04.09>	cp. porta post.	160742875	42,00 ●	689500F030	472	535	8	18	S5	S5
Yaris I (CP10)	04.99>09.05	cp. porta post. DX	160642189	86,00 ●	6895059025	504	265	8	18	X	X
		porta post. SX			6896059025	504	265	8	18	X	X
Yaris II (P9)	01.06>	cp. porta post.	160642400	50,00 ●	689500D021	430	370	8	18	S5	S5
Yaris III (P13)	09.11>	cp. porta post.	160742876	42,00 ●	689500W641	416	405	8	18	S5	S6
VOLKSWAGEN											
Bora (1J6) Variant	05.99>05.05	cp. porta post.	160644702	37,60 ●	1J6827550/C	500	500	8	18	S5	S6
Caddy I (14)	01.82>01.95	cp. porta post.	160644037	42,40 ●	147827550	500	230	8	18	O2	S1
Caddy III (2K, 2C)	03.04>	cp. porta post.	160644401	54,80 ●	2K0827550	720	870	10	22	S1	S1
Caddy III (2K, 2C)	08.10>	cp. porta post.	160744886	42,00 ●	1T0823359D	360	450	8	18	S5	S1
Fox (5Z)	04.05>	cp. porta post.	160613582	40,60 ●	5Z6827550B	470	360	8	18	S1	S1
Golf I (17)	04.74>07.83	cp. porta post.	160644542	36,60 ●	171827550A	497	470	8	18	O2	O2
Golf II (19E)	06.84>10.91	cp. porta post.	160644543	33,80 ●	191827550B	497	320	8	18	S1	S1
Golf III (1HX)	10.91>08.97	cp. porta post.	160644544	35,00 ●	1H6827550A	500	350	8	18	S1	S6
Golf III (1HX0) Variant	07.93>04.99	cp. porta post.	160644331	47,60 ●	1H9827550A	585	360	8	18	S1	S6
Golf IV (1J1, 1J5, 1E7)	10.98>06.06	cp. cofano	160603686	39,60 ●	8L0/1J0823359	502	350	8	18	S5	S6
Golf IV (1J1, 1J5)	08.97>06.06	cp. porta post.	160644702	37,60 ●	1J6827550/C	500	500	8	18	S5	S6
Golf V (1K1)	10.03>11.08	cp. porta post.	160644404	44,00 ●	1K6827550	450	535	8	18	S5	S1
Golf VI (5K1)	10.08>11.12	cp. porta post.	160744466	52,00 ●	5K6827550B	440	550	8	18	S5	S1
Golf VI (5K1)	10.08>11.12	cp. porta post.	160744888	44,00 ●	5K6827550B/D	437	550	8	22	S1	S1
Golf VII (5G1, BE1)	08.12>	cp. baule	160744890	48,00 ●	5G6827550C	530	520	8	22	S6	S6
Jetta III (1K2)	09.05>10.10	cp. porta post.	160644418	48,80 ●	1K5827550C	500	710	10	22	S3	S3
Lupo (6X, 6E)	04.98>11.00	cp. porta post.	160644136	33,20 ●	6X0827550	500	350	8	18	S1	S6
Lupo (6X, 6E)	11.00>07.05	cp. porta post.	160644407	44,80 ●	6E0827550B	500	365	8	18	S1	S6
New Beetle (C1) escluso Cabrio	01.98>	cp. porta post.	160644192	42,80 ●	1C0827550A/B/C/D/E	600	330	8	18	S5	S6

I prodotti contrassegnati dal simbolo ▼ si intendono ad esaurimento scorte.

LA: lunghezza totale (mm) ØT: diametro tubo (mm) AS: attacco stelo AT: attacco tubo ØS: diametro stelo (mm) F: carica in Newton



MODELLO E ANNO	APPLICAZIONE	CODICE	PREZZO €	O.E.M.	LA	F	ØS	ØT	AS	AT
segue VOLKSWAGEN										
New Beetle (1Y7) Cabriolet	09.02>	cp. porta post.	160644408	45,60 ●	1Y0827550B/D	200	250	8	18	S5 S1
Passat I (32)	05.73>07.80	cp. baule	160644021	36,00 ●	321827550B	547	350	8	18	O2 O2
Passat II (32B)	08.80>03.88	cp. baule	160644631	39,60 ●	321827550F	536	480	8	18	O2 O2
Passat II (32B) Variant	08.80>03.88	cp. porta post.	160644038	61,20 ●	331827550B/C	570	380	8	18	X S3
Passat berlina	1987>1996	cp. cofano	160644567	42,40 ●		697	280	8	18	S3 O2
Passat III (3A5, 35I) Variant	04.88>05.97	cp. porta post.	160644565	37,60 ●	333827550B/C	518	460	8	18	S1 S3
Passat IV (3B2, 3B5)	08.96>11.00	cp. cofano	160644634	55,40 ●	3B0823359A	725	280	8	18	S6 S6
Passat IV (3B2)	08.96>11.00	cp. baule	160644703	37,60 ●	3B5827550	278	460	8	18	S1 S1
Passat IV (3B5) Variant	06.97>11.00	cp. porta post.	160644702	37,60 ●	3B9827550	500	500	8	18	S5 S6
Passat IV (3B3, 3B6)	09.00>05.05	cp. cofano	160644634	55,40 ●	3B0823359C/D	725	280	8	18	S6 S6
Passat IV (3B3)	09.00>05.05	cp. baule	160644409	42,60 ●	3B5827550E/F	280	520	8	18	S1 S1
Passat IV (3B6) Variant	09.00>05.05	cp. porta post.	160644702	37,60 ●	1J6827550C	500	500	8	18	S5 S6
Passat VI (365) Variant, All Track	08.10>12.14	cp. porta post.	160744892	42,00 ●	3AF827550B	453	580	8	18	S6 S1
Polo II (86, 86C)	10.81>04.86	cp. porta post.	160644545	37,60 ●	867827550/A	498	550	8	18	S3 O2
Polo II (86, 86C)	05.86>07.90	cp. porta post.	160644579	38,60 ●	867827550C	498	550	8	18	S1 S1
Polo II (86C)	07.90>09.94	cp. porta post.	160644546	34,00 ●	867827550D	513	550	8	18	S3 S3
Polo III (6N1)	10.94>10.99	cp. porta post.	160644633	35,00 ●	6N0827550A	430	330	8	18	S1 S1
Polo III (6N2)	10.99>09.01	cp. cofano	160644410	45,60 ●	6N0823359	585	250	8	18	S6 S6
Polo III (6N2)	10.99>09.01	cp. porta post.	160644633	35,00 ●	6N0827550A	430	330	8	18	S1 S1
Polo III (6K2) Classic	11.95>12.99	cp. porta post.	160637616	39,60 ●	6K5827550A	285	315	8	18	S1 S1
Polo III (6K2) Classic	12.99>09.01	cp. porta post.	160644383	42,60 ●	6K5827550C	285	365	8	18	S1 S1
Polo III (6K5) Variant	05.97>09.01	cp. porta post.	160637312	41,20 ●	6K0827550/A	503	440	8	18	S1 S1
Polo IV (9N)	10.01>05.08	cp. cofano	160644413	44,80 ●	6Q0823359/A/C	500	310	8	18	S1 S6
Polo IV (9N)	10.01>05.08	cp. porta post.	160644237	44,80 ●	6Q6827550C	500	380	8	18	S1 S6
Polo IV (9N) con spoiler	10.01>05.08	cp. porta post.	160644414	44,80 ●	6Q6827550/A	500	400	8	18	S1 S6
Polo V (6R)	06.09>	cp. porta post.	160744467	50,00 ●	6R6827550A	525	325	8	18	S1 S1
Sharan (7M)	09.95>03.10	cp. porta post.	160614659	62,60 ●	7M0827550D/F/G	596	775	10	27	S6 S1
Tiguan (5N)	09.07>	cp. porta post.	160744468	52,00 ●	5N0827550D	515	475	8	18	S5 S5
Touareg (7L) lunotto	10.02>05.10	cp. porta post.	160644416	50,00 ●	7L6845587A	317	550	8	18	S5 S5
Touareg (7P5)	04.10>	cp. porta post.	160744894	50,00 ●	7P6827550	592	605	8	22	S1 S1
Touran (1T)	02.03>	cp. porta post.	160644238	46,60 ●	1T0827550C	505	770	10	22	S5 S5
Transporter	-	cp. porta post.	160644547	40,60 ●		515	570	8	18	S1 S1
Transporter/Bus T3	05.79>07.92	cp. porta post.	160644635	47,20 ●	251829331A	510	610	8	18	S1 O2
Transporter/BusT4 (70XB / XC)	01.90>07.92	cp. porta post.	160644194	71,40 ●	701829331H	570	910	10	22	S1 S1
Transporter T5 (7H_)	04.03>	cp. porta post.	160644339	63,80 ●	7H0827550	755	970	10	28	S1 S1
Vento Hatchback (1H2)	11.91>09.98	cp. porta post.	160644630	42,40 ●	1H5827550A	500	300	8	18	S3 S3
Vento (1H2)	11.91>09.98	cp. baule	160644632	42,40 ●	1H5827550B	258	690	8	18	S5 S5
VOLVO										
140 (145) station wagon	08.66>02.75	cp. porta post.	160645042	44,80 ●	683627	470	700	8	18	X O2
145 Variant De Luxe	1977>1994	cp. porta post.	160645043	44,80 ●	1254916	465	410	10	22	X O2
240 (P242, P244)	08.74>12.93	cp. porta post.	160645042	44,80 ●	683627	470	700	8	18	X O2
240 (P245) Kombi	08.79>08.93	cp. porta post.	160645043	44,80 ●	1254916	465	410	10	22	X O2
260 (P242, P244)	08.74>07.92	cp. porta post.	160645042	44,80 ●	683627	470	700	8	18	X O2
260 (P245) station wagon	07.75>07.92	cp. porta post.	160645043	44,80 ●	1254916	465	410	10	22	X O2
340 - 360 (343, 345)	08.75>07.91	cp. porta post.	160645666	40,20 ●	3342881	542	360	8	18	S1 S1
440 - 460 (445)	09.88>12.96	cp. porta post.	160645618	42,40 ●	3470348	550	420	8	18	S3 S3
440 - 460	1996>1997	cp. cofano	160645032	53,40 ●	3463468	780	420	8	18	O2 P3
480 E	04.86>07.96	cp. porta post.	160645619	42,40 ●	3458557	534	200	8	18	S3 S3
740 (744) - 760 (704, 764)	08.81>07.92	cp. porta post.	160645044	44,80 ●	1334648	368	290	6	15	X O2
740 (745) Kombi	08.85>08.92	cp. porta post.	160645664	44,80 ●	6846014	545	320	8	18	S3 S3
760 (704, 765) Kombi	01.82>08.92	cp. porta post.	160645664	44,80 ●	6846014	545	320	8	18	S3 S3
850 (LS) berlina	06.91>12.96	cp. baule	160645033	43,40 ●	3509350	463	300	6	15	X O2
850 (LW) station wagon	08.92>12.96	cp. porta post.	160645617	87,00 ●	3509482	272	1500	14	28	S4 S4
940 (944)	08.90>10.98	cp. baule	160645668	44,80 ●	3526575	524	310	8	18	S1 S1
940 (945) Kombi	08.90>10.98	cp. porta post.	160645664	44,80 ●	6846014	545	320	8	18	S3 S3
960 (964)	08.90>12.96	cp. baule	160645668	44,80 ●	3526575	524	310	8	18	S1 S1
960 (965) Kombi	08.90>12.96	cp. porta post.	160645664	44,80 ●	6846014	545	320	8	18	S3 S3
C30	10.06>	cp. porta post.	160745477	45,00 ●	31278323	485	360	8	18	S5 S5
S40 I (VS)	07.95>01.04	cp. cofano	160645704	68,80 ●	30819865	751	300	8	18	S5 S5
S40 I (VS)	07.95>01.04	cp. baule	160645663	44,80 ●	30852059	298	490	8	18	S5 S5
S40 II (MS)	01.04>	cp. baule	160645239	47,40 ●	30674971/30799158	325	360	8	18	S5 S5
S60	11.00>04.10	cp. baule	160645422	41,20 ●	8650233	270	420	8	18	S5 S5
S70 (P80)	01.97>11.00	cp. baule	160645423	44,00 ●	9485546	495	320	8	18	X S5
S80 (TS, XY)	05.98>07.06	cp. baule	160645711	47,20 ●	9483297	358	310	8	18	S5 S5
S80 II (AS)	03.06>	cp. baule	160745878	38,00 ●	30779837	292	600	8	18	S1 S1
S90	01.97>05.98	cp. baule	160645668	44,80 ●	3526575	524	310	8	18	S1 S1
V40 (VW) station wagon	07.95>06.04	cp. cofano	160645704	68,80 ●	30819865	751	300	8	18	S5 S5
V40 (VW) station wagon	07.95>06.04	cp. porta post.	160645662	44,80 ●	30803472	603	320	8	18	S5 S6
V40	03.12>	cp. porta post.	160745879	46,00 ●	31395607	573	350	8	18	S1 S6
V50 (MW)	03.04>	cp. porta post.	160645240	44,20 ●	30799159	430	470	8	18	S5 S5
V60	09.10>	cp. baule	160745882	46,00 ●	31217910	562	445	8	18	S1 S1
V70 I (P80) station wagon	11.96>05.05	cp. porta post.	160645617	87,00 ●	3509482 / 9485548	272	1500	14	28	S4 S4
V70 II (P80) station wagon	03.00>08.07	cp. porta post.	160645340	53,00 ●	30799161	320	1160	10	28	S3 S3
V90 station wagon	11.96>12.98	cp. porta post.	160645664	44,80 ●	6846014	545	320	8	18	S3 S3
XC60	05.08>	cp. baule	160745885	50,00 ●	31297524	556	620	8	18	S4 S4
XC70 Cross Country	03.00>08.07	cp. porta post.	160645340	53,00 ●	30799161	320	1160	10	28	S3 S3

I prodotti contrassegnati dal simbolo ▼ si intendono ad esaurimento scorte.

LA: lunghezza totale (mm) **ØT:** diametro tubo (mm) **AS:** attacco stelo **AT:** attacco tubo **ØS:** diametro stelo (mm) **F:** carica in Newton

Attacco speciale: **X**









